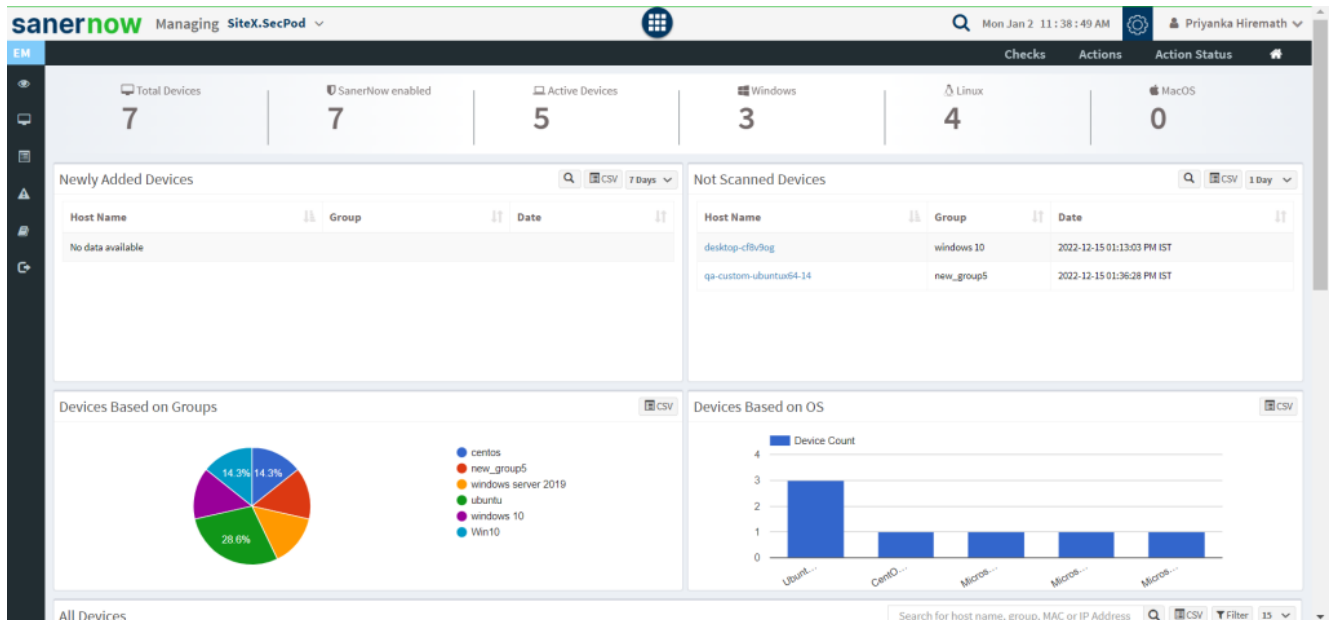


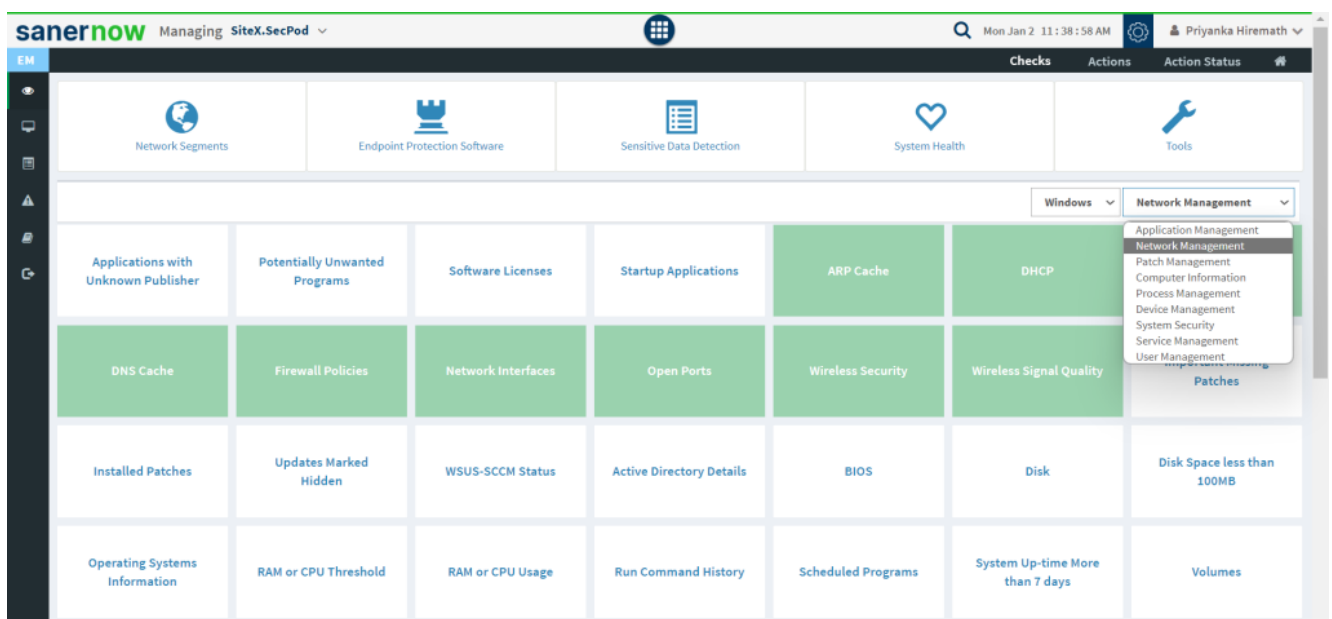
# How to check all firewall policies on Windows systems?

1. Go to **Endpoint management** dashboard.

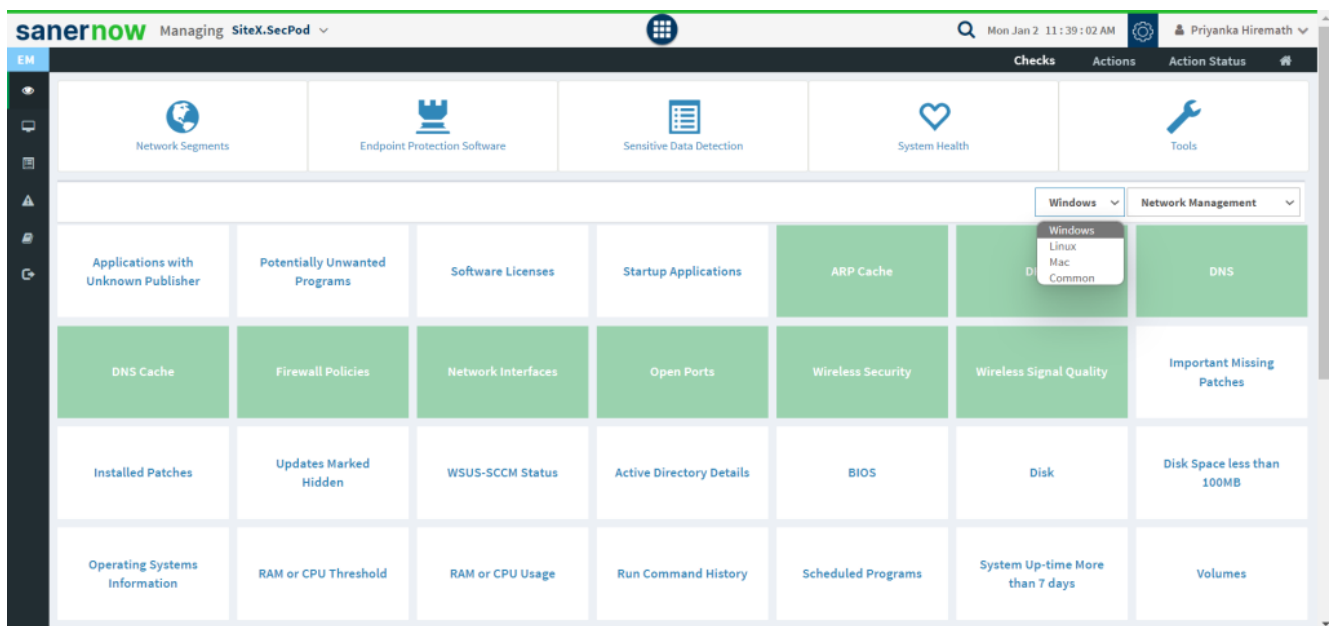


2. Click on 'Checks'.

3. On right side, from the dropdown select '**Network Management**'.



4. Now, select the operating system: **Windows**.



5. The checks corresponding to this filter will be highlighted in green.

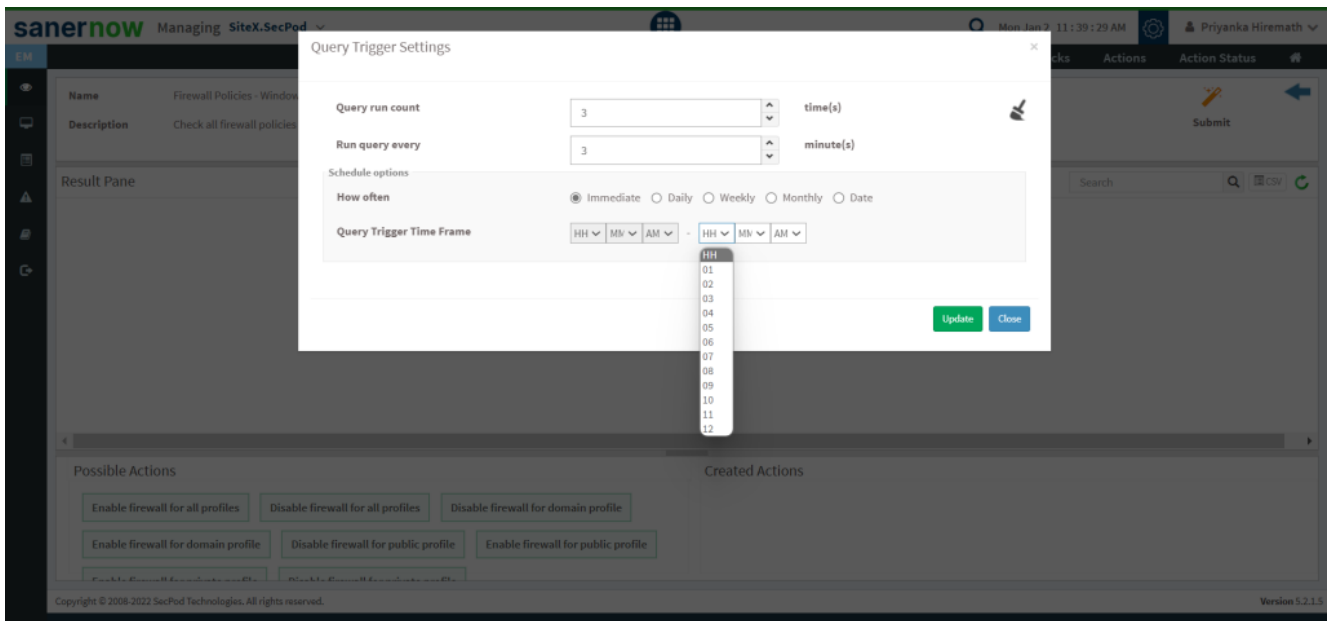
6. Select the '**Firewall Policies**' check.

7. You will be displayed with the check name, description, result pane, and possible actions after triggering the check.

8. To schedule the query execution for the agent, click on **Trigger**.

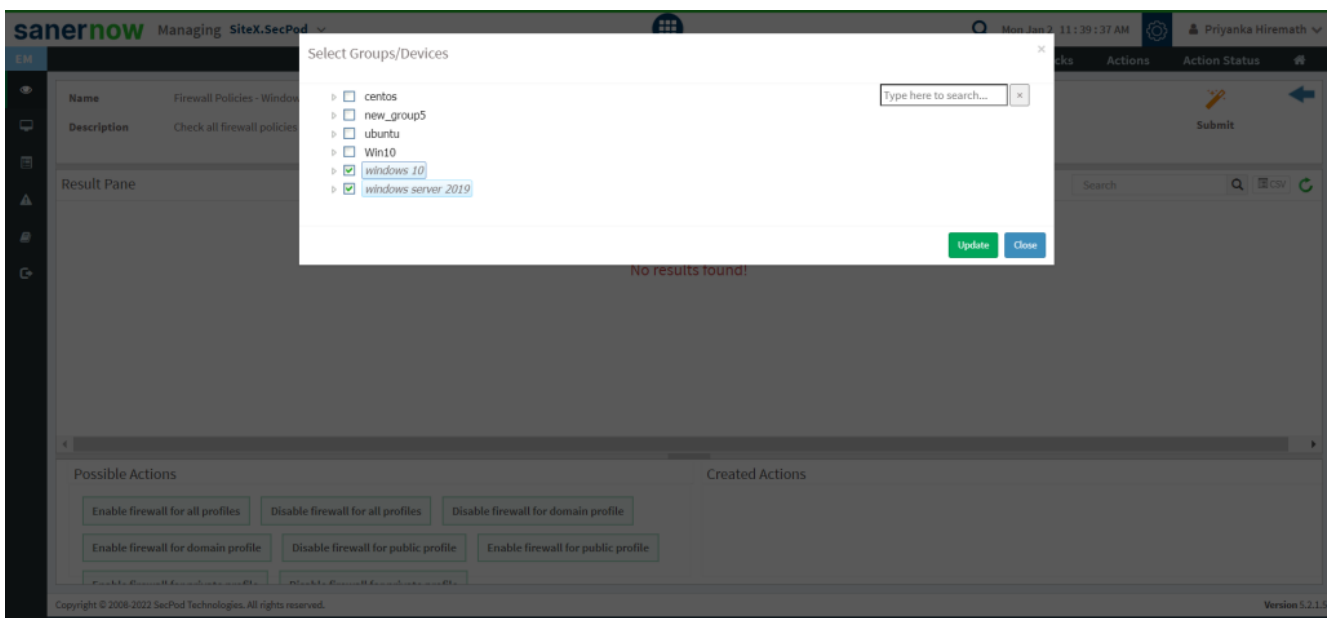
9. Update the query trigger settings:

- Set the Query run count time in seconds.



- Set the time in minutes to run the query often.
- In Schedule options pane, set the **Query Trigger Time Frame**.
- Click on **Update**.

10. Select the **Scope** to assign the query to the group/devices.



11. To send query to the agent, click on **Submit**.

12. In **Result pane**, you will be displayed with all the firewall policies.

13. You can take possible actions according to the results. Possible actions are specified at the bottom pane. Click on the desired action, you will be redirected to Create Response page. In Created Actions, you will find all the responses created for the following check.

The screenshot displays the 'Create Response' interface in the SanerNow application. The top navigation bar includes the 'sanernow' logo, 'Managing SiteX.SecPod', a search icon, the date 'Mon Jan 2 11:40:47 AM', and the user 'Priyanka Hiremath'. The main content area is titled 'Create Response' and contains several input fields and a list of actions.

**Operating System Family\***: A dropdown menu with 'Windows' selected.

**Response Name\***: A text input field with 'name \*' as a placeholder.

**Response Description\***: A text input field with 'Action for Firewall Policies - Windows' as a placeholder.

**Action\***: A dropdown menu with 'Enable firewall for all profiles' selected. A list of actions is visible below the dropdown:

- Disable firewall for all profiles
- Disable firewall for domain profile
- Disable firewall for private profile
- Disable firewall for public profile
- Enable firewall for all profiles
- Enable firewall for domain profile
- Enable firewall for private profile
- Enable firewall for public profile
- Set DEP Settings

**How often**: Radio buttons for 'Immediate' (selected), 'Daily', 'Weekly', 'Monthly', and 'Date'.

**Operating Systems**: A list of operating systems with checkboxes:

- centos
- new\_group5
- ubuntu
- Win10
- windows 10
- windows server 2019

The footer of the page contains the text 'Copyright © 2008-2022 SecPod Technologies. All rights reserved.' and 'Version 5.2.1.5'.

Now you know how to check all firewall policies in Windows systems.