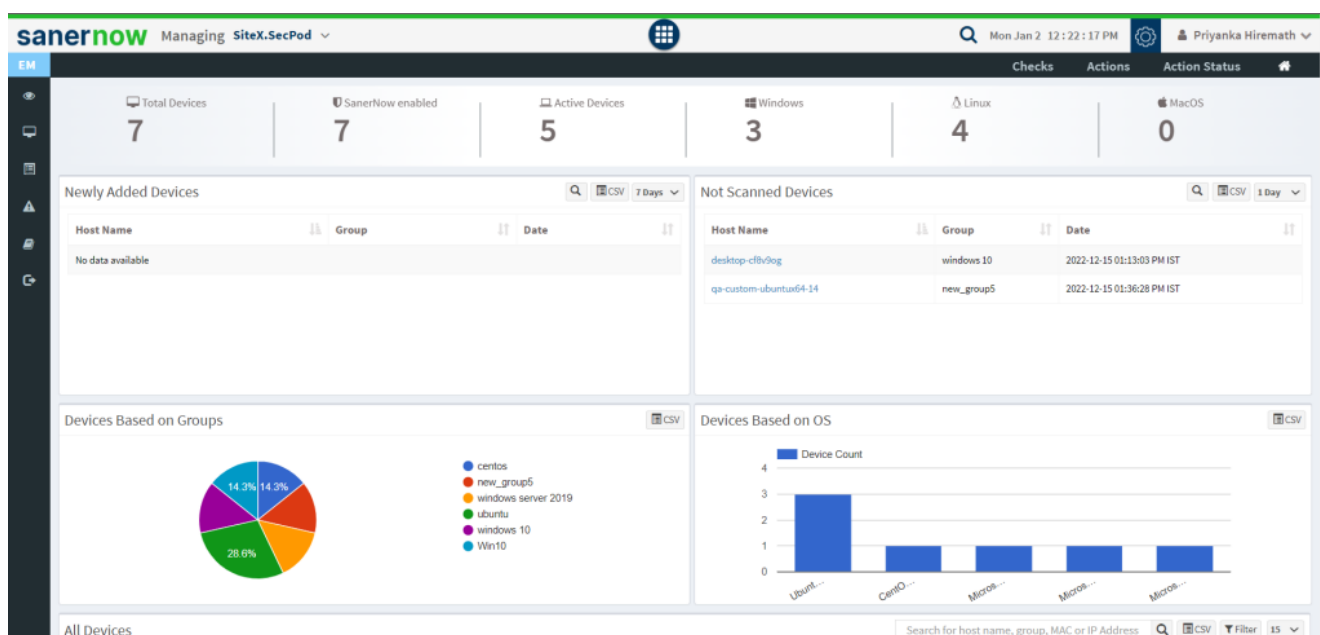


How to check wireless security in Windows systems?

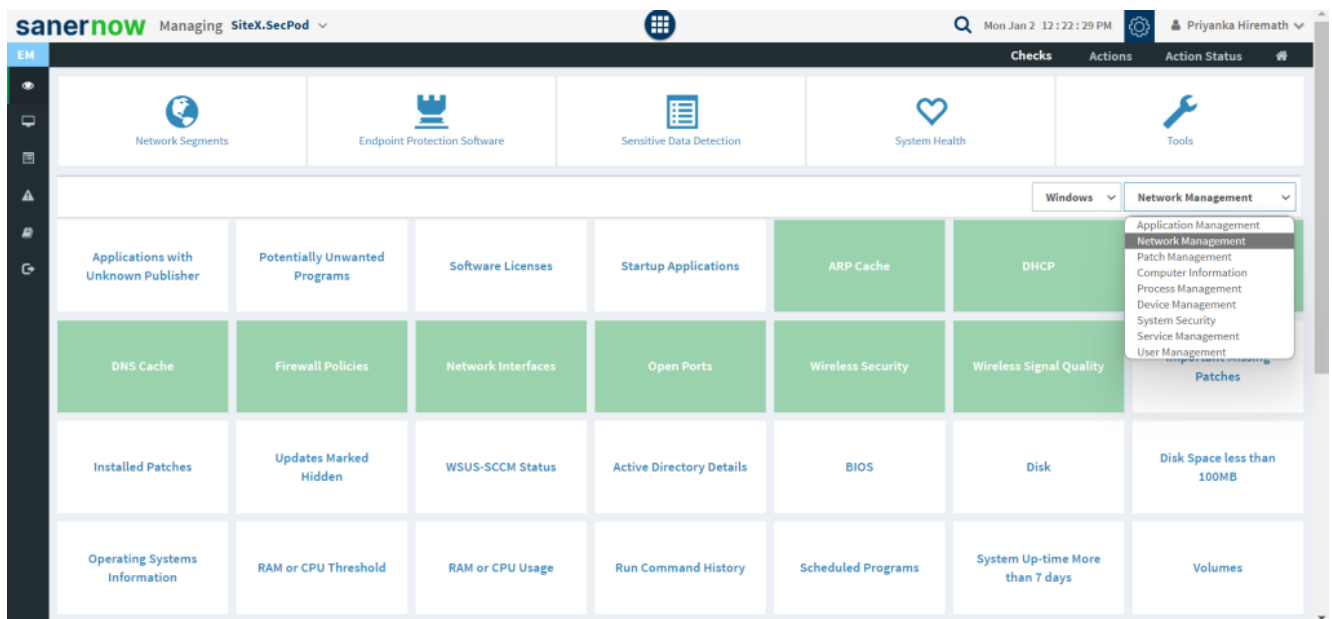
To check wireless security in Windows systems, follow the steps below:

1. Go to **Endpoint Management** module in SanerNow.

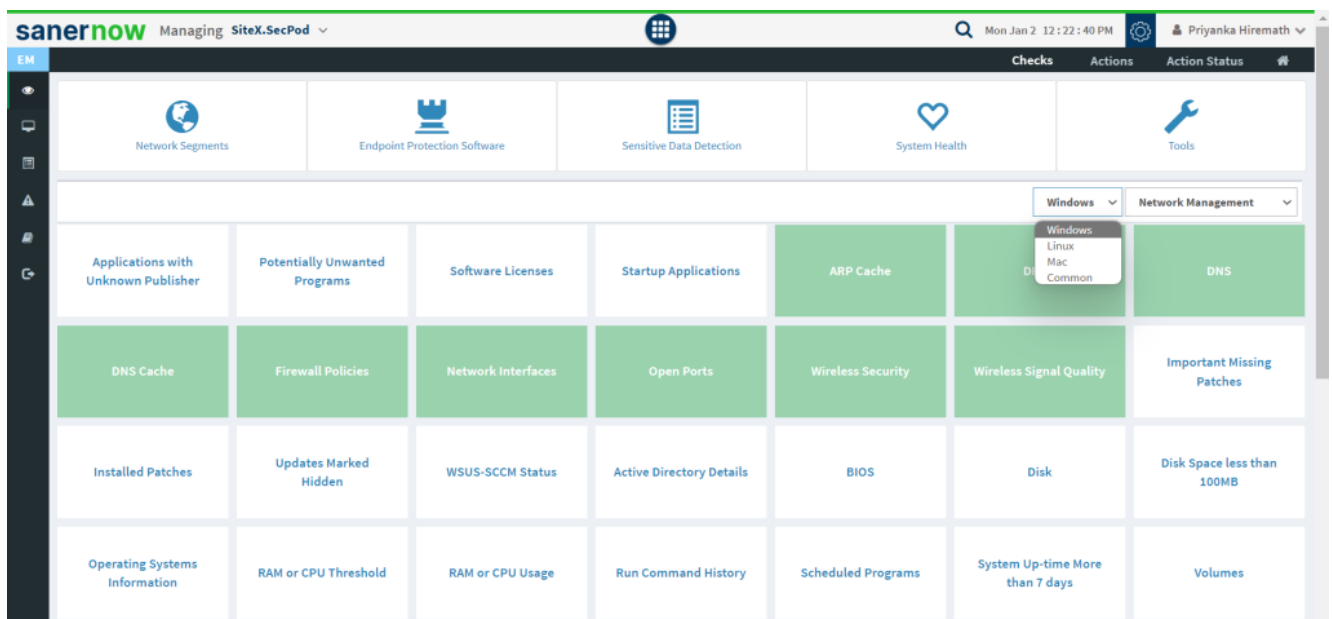


2. Click on **Checks**.

3. On the right-hand side, from the drop-down list select '**Network Management**'.



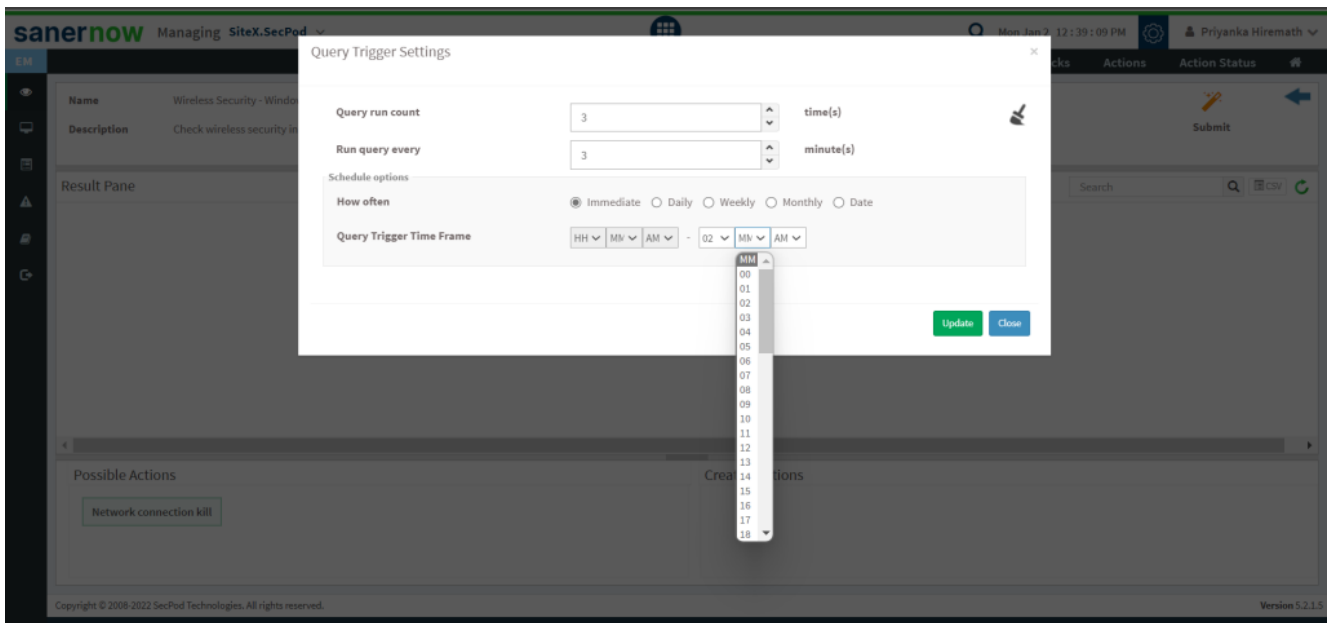
4. Select the operating system: **Windows**.



5. The checks corresponding to network management for Windows are highlighted in green.

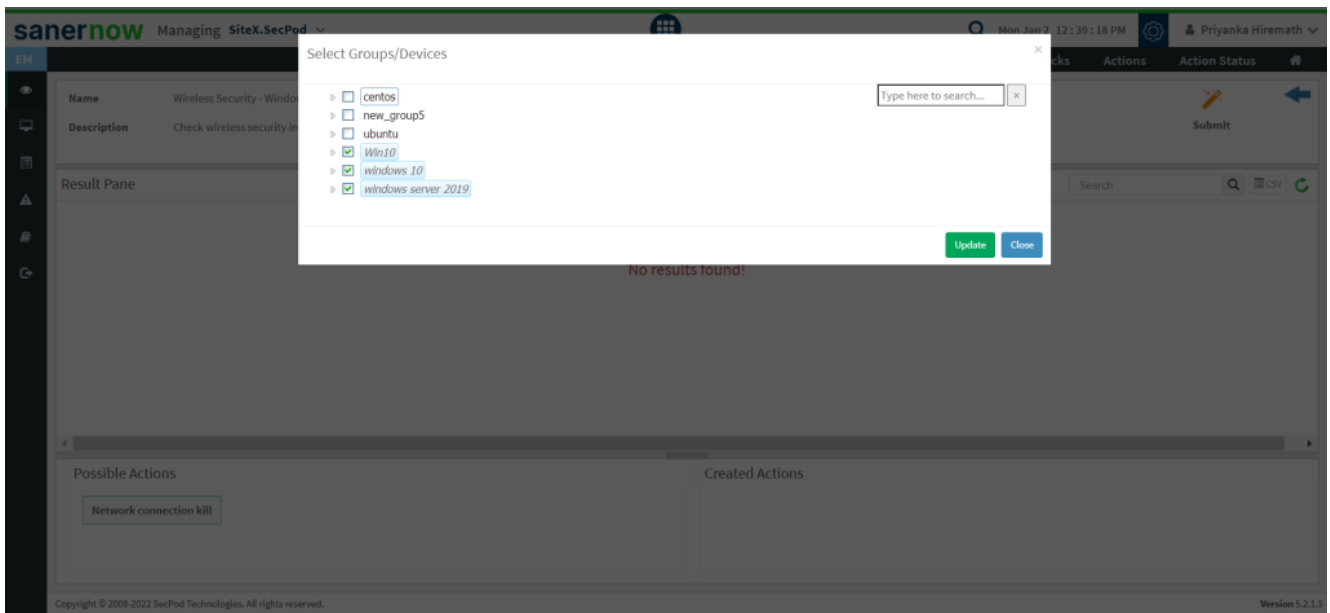
6. To schedule the query execution for the agent, click on **Trigger**. You need to fill up query trigger settings:

- Set the Query run count time in seconds.



- Set the time in minutes to run the query often.
- In Schedule options pane, set the **Query Trigger Time Frame**.
- Click on **Update**.

7. Click on the '**Scope**' to choose the scope of the query.



8. To send the query to agent, click on '**Submit**'.

9. In the **Result Pane**, you can check wireless security information on Windows systems.

10. You can take possible actions according to the results. Possible actions are specified at the bottom pane. Click on the desired action, you will be redirected to Create Response page. In Created Actions, you will find all the responses created for the following check.

The screenshot displays the 'Create Response' interface in the SanerNow application. The top navigation bar shows 'sanernow Managing SiteX.SecPod' and a user profile 'Priyanka Hiremath'. The main content area is titled 'Create Response' and contains several input fields and a list of operating systems.

Form Fields:

- Operating System Family*:** A dropdown menu with 'Windows' selected.
- Action*:** A dropdown menu with 'Network connection kill' selected.
- Response Name*:** A text input field with the placeholder 'name *'.
- Response Description*:** A text input field with the placeholder 'Action for Wireless Security - Windows'.
- IP Address*:** A text input field.
- Local Port*:** A text input field.
- Remote IP Address*:** A text input field.
- Remote Port*:** A text input field.

How often: A section with radio buttons for 'Immediate' (selected), 'Daily', 'Weekly', 'Monthly', and 'Date'.

Operating Systems List: A list of operating systems with checkboxes: centos, new_group5, ubuntu, Win10, windows 10, and windows server 2019.

Buttons: 'Create Response' and 'Clear Fields' buttons are located on the right side of the form.

Footer: The page footer includes 'Copyright © 2008-2022 SecPod Technologies. All rights reserved.' and 'Version 5.2.1.5'.

Now you know how to check wireless security on Windows system.