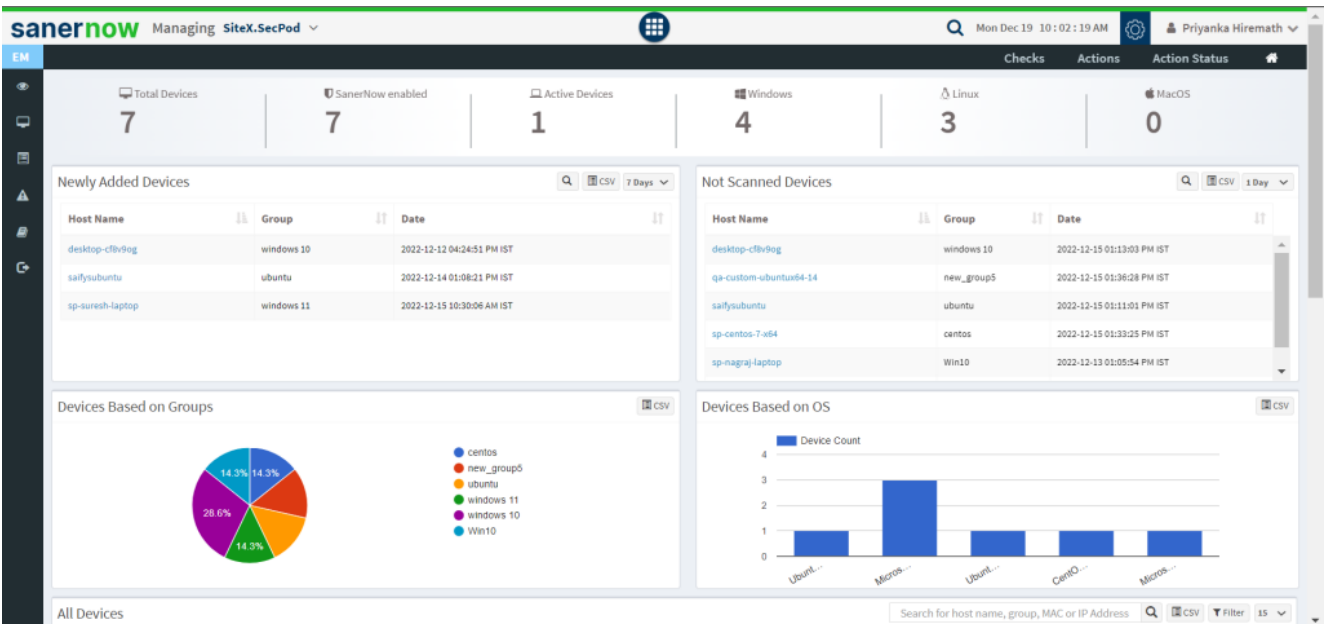
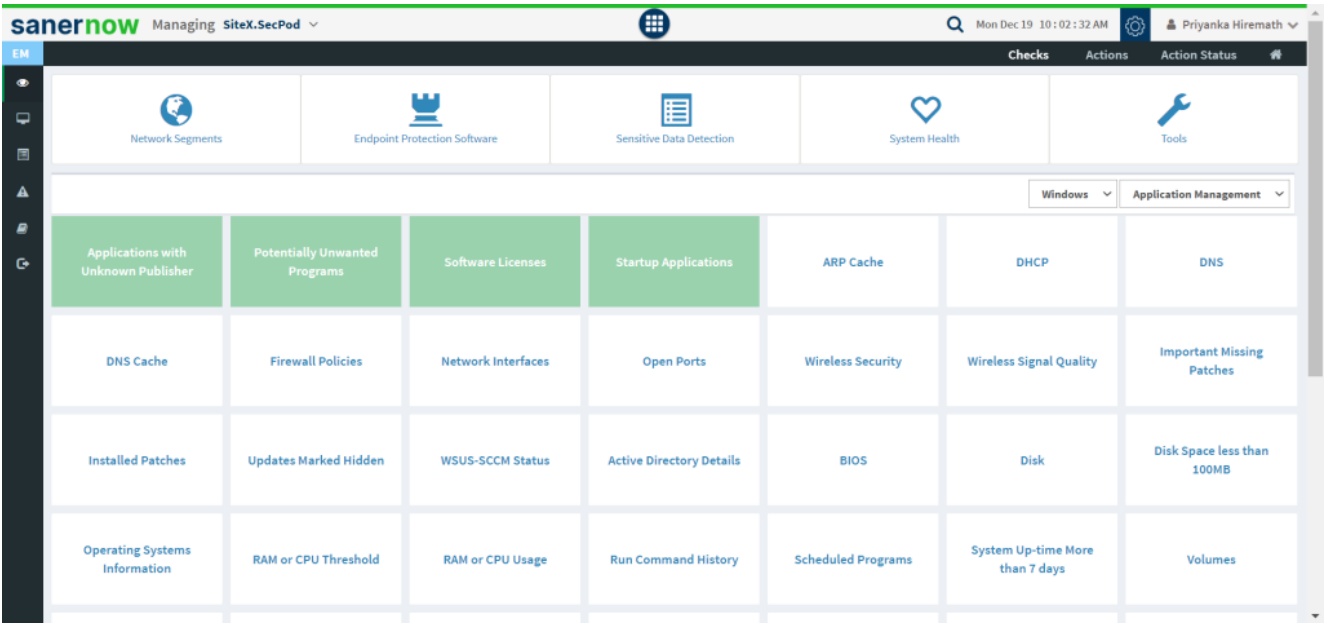


How to collect a list of applications that are started when you boot your computer?

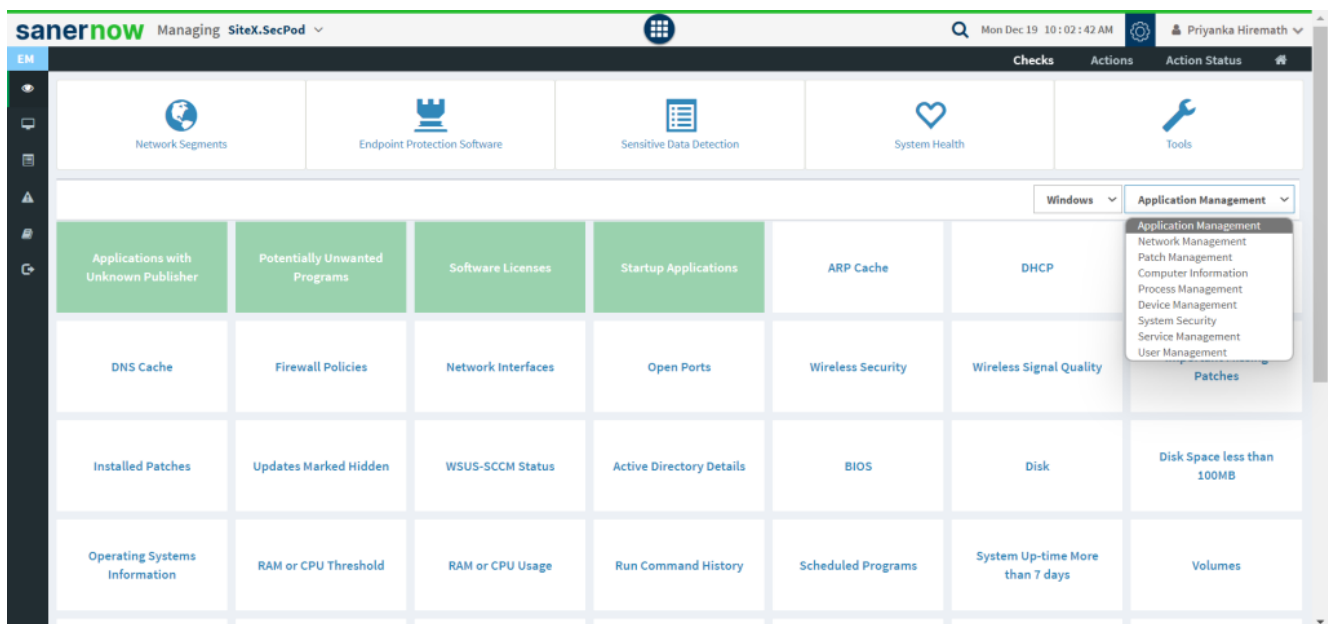
1. Go to **Endpoint Management** module in SanerNow.



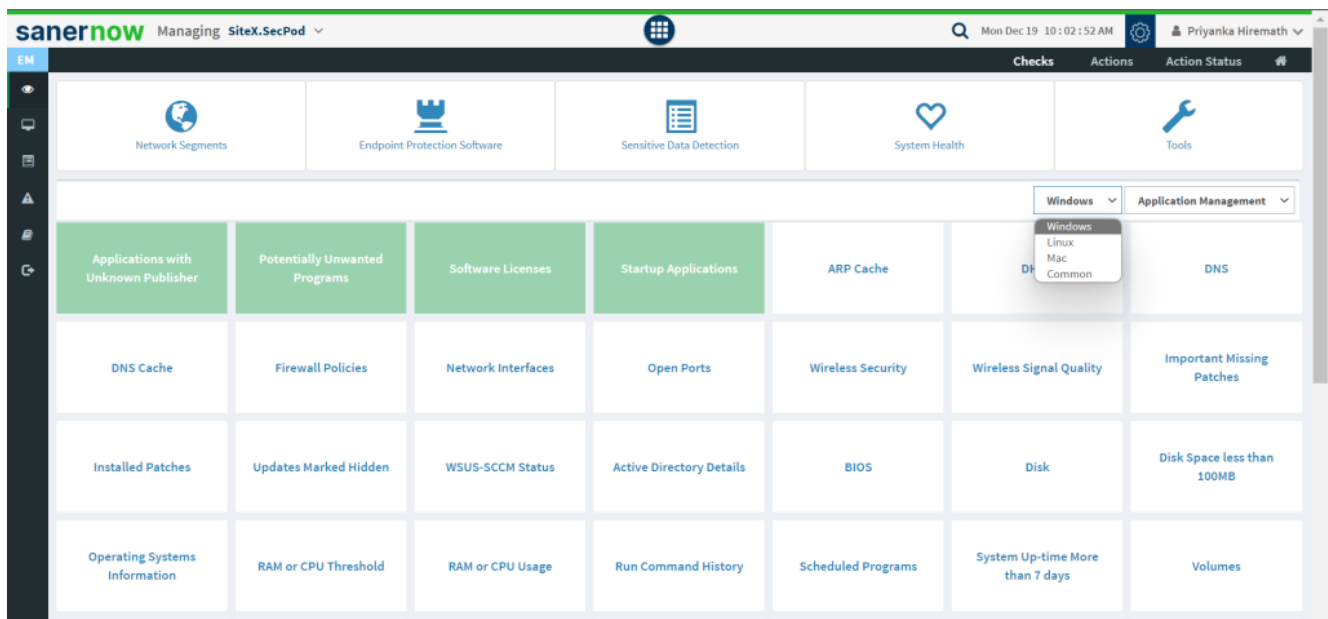
2. Click on **Checks**.



3. In the right side, select **Application management** from the dropdown list.



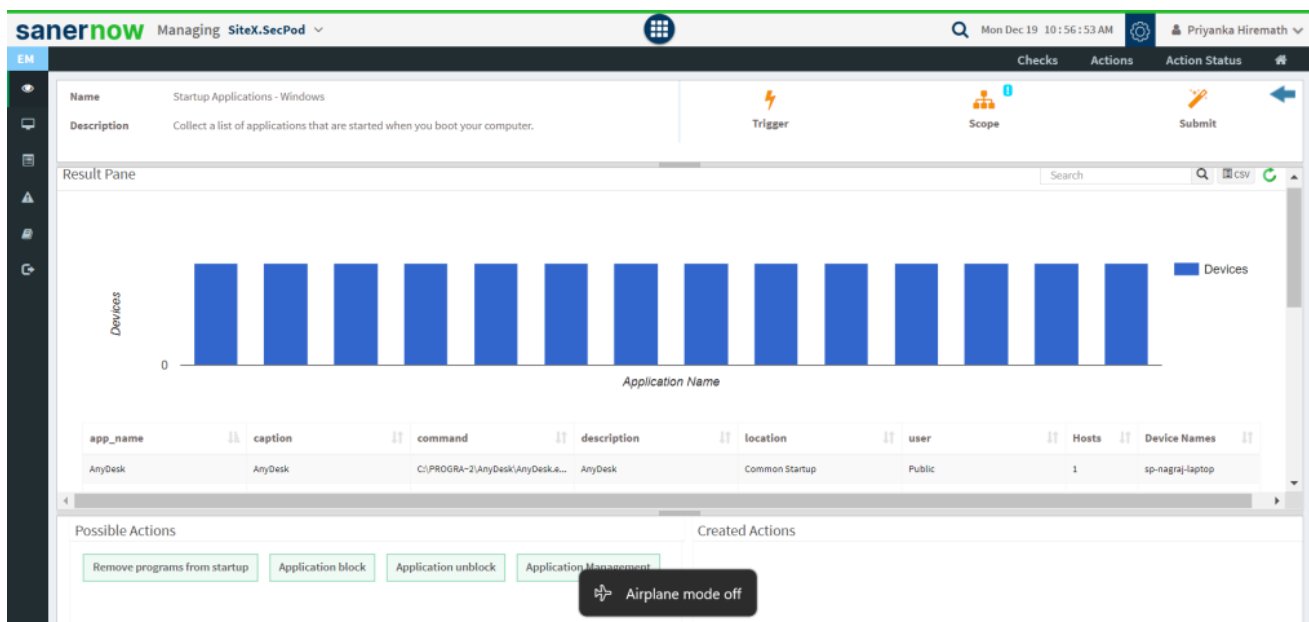
4. Also, select the operating system: Windows.



5. The checks corresponding to this filter will be highlighted in green.

6. Select the '**Startup Applications**' check.

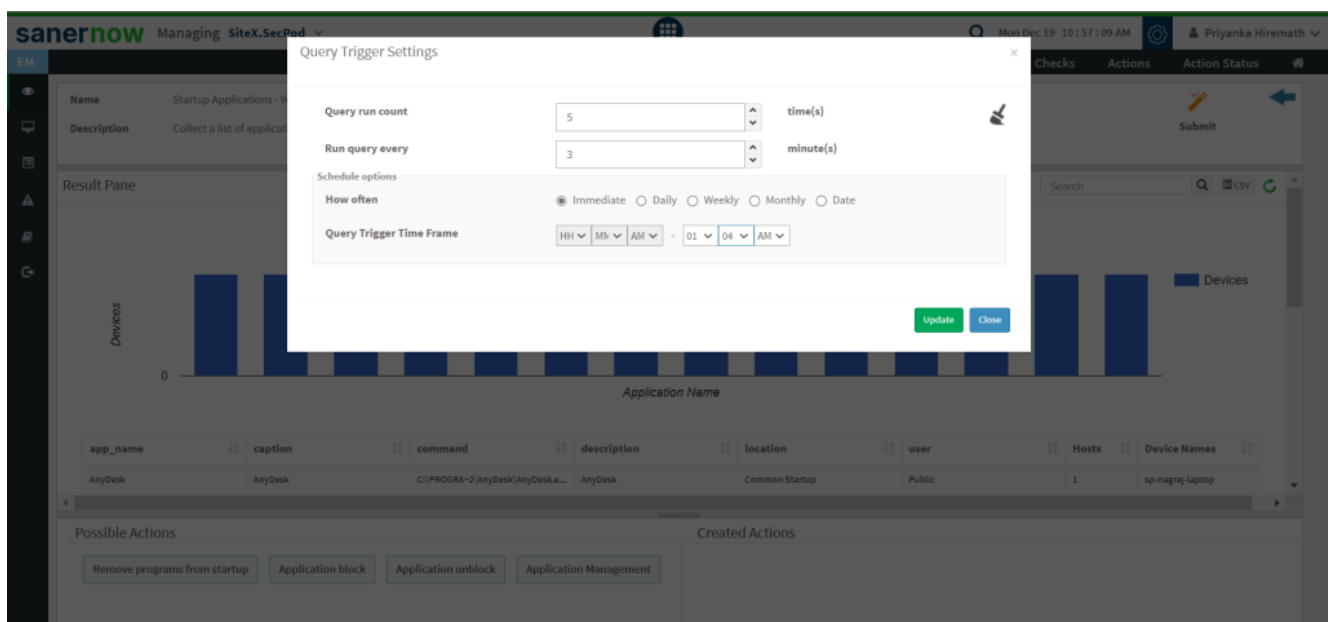
7. You will be displayed with the check name, description, result pane, and possible actions after triggering the check.



8. To schedule the query execution for the agent, click on **Trigger**.

9. Update the query trigger settings:

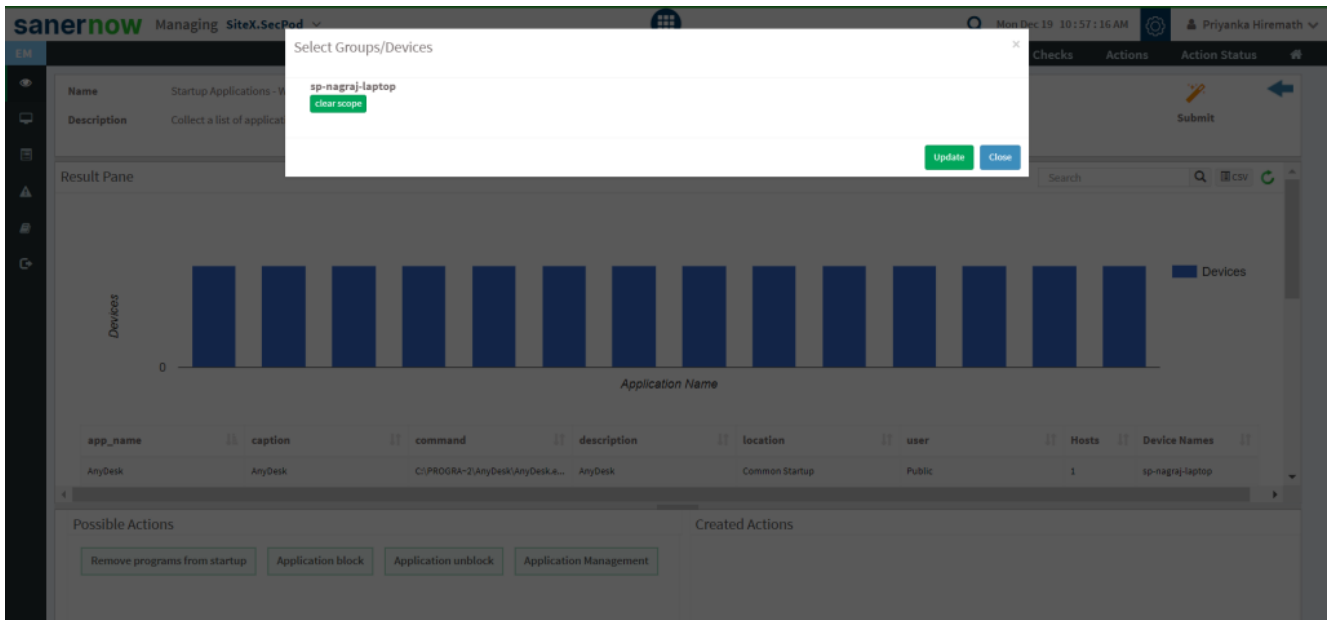
- Set the Query run count time in seconds.



- Set the time in minutes to run the query often.
- In Schedule options pane, set the **Query Trigger Time Frame**.

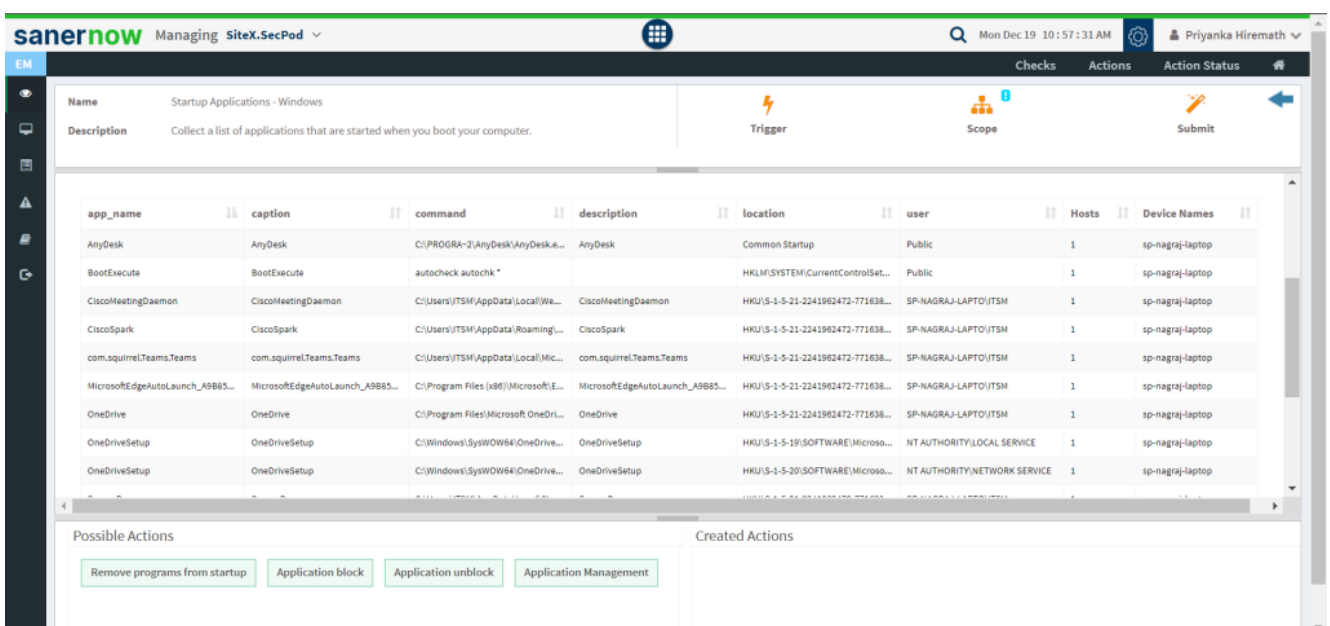
- Click on **Update**.

10. Select the **Scope** to assign the query to the group/devices.



11. To send query to the agent, click on **Submit**.

12. In **Result pane**, you will be displayed with all the applications that are started when you boot your computer.



13. You can take possible actions according to the results. Possible actions are specified at the

bottom pane. Click on the desired action, you will be redirected to Create Response page.

sanernow Managing SiteX.SecPod

Mon Dec 19 11:00:24 AM Priyanka Hiremath

Checks Actions Action Status

Create Response

Operating System Family*
Windows

Action*
Remove programs from startup

Response Name*
name *

Response Description*
Action for Startup Applications - Windows

Create Response

Clear Fields

☐ Select all

☐ Delete Cached Update Binary

☐ RtkAudioService

☐ ScreenRec

☐ WebCheck

☐ com.squirrel.Teams.Teams

☐ OneLoginDesktopTrayApp

☐ SecurityHealth

☐ Shell

☐ OneDrive

☐ FlashPlayerUpdate

☐ BootExecute

☐ MicrosoftEdgeAutoLaunch_A9B8502A813302E25263641A605EAE34

☐ Load

☐ Delete Cached Standalone Update Binary

☐ MicrosoftEdgeAutoLaunch_8900E404230B77E6D671D093924B16FC

☐ Enforce as a rule / Apply always.

How often
☒ Immediate ☐ Daily ☐ Weekly ☐ Monthly ☐ Date

☐ centos

☐ new_group5

☐ ubuntu

☐ Win10

☐ windows 10

☐ windows 11

Now you know how to collect list of applications that are started when you boot your computer.