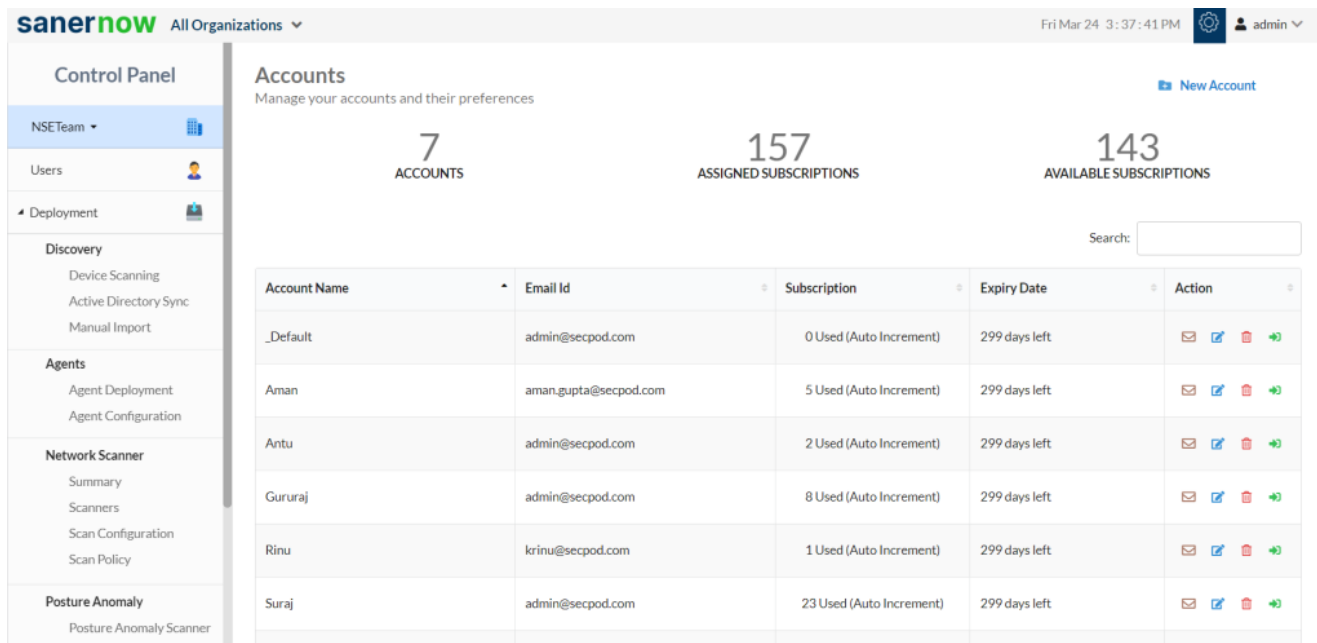


How to designate saner agent to perform network scan?

You can designate saner agent to perform network scan. The saner agent must be already installed on the device to upgrade the device as a network scanner.

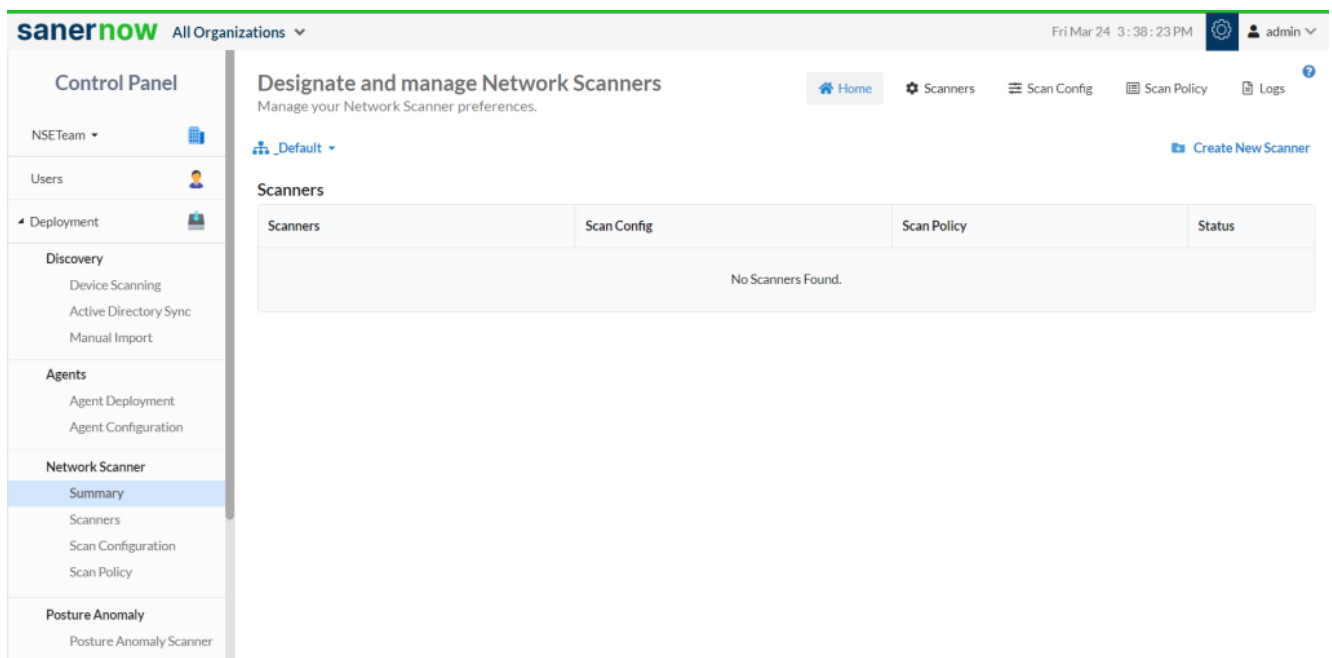
1. Go to **Control Panel**



The screenshot shows the SanerNow web interface. The top bar includes the SanerNow logo, 'All Organizations', the date 'Fri Mar 24 3:37:41 PM', and a user profile 'admin'. The left sidebar is titled 'Control Panel' and contains a dropdown menu 'NSETeam'. Below this are sections for 'Users', 'Deployment', 'Discovery' (with sub-items: Device Scanning, Active Directory Sync, Manual Import), 'Agents' (with sub-items: Agent Deployment, Agent Configuration), 'Network Scanner' (with sub-items: Summary, Scanners, Scan Configuration, Scan Policy), and 'Posture Anomaly' (with sub-item: Posture Anomaly Scanner). The main content area is titled 'Accounts' with the subtitle 'Manage your accounts and their preferences'. It features three large statistics: '7 ACCOUNTS', '157 ASSIGNED SUBSCRIPTIONS', and '143 AVAILABLE SUBSCRIPTIONS'. A 'New Account' button is in the top right. Below the statistics is a search bar. A table lists the accounts:

Account Name	Email Id	Subscription	Expiry Date	Action
_Default	admin@secpod.com	0 Used (Auto Increment)	299 days left	[Email] [Link] [Delete] [Refresh]
Aman	aman.gupta@secpod.com	5 Used (Auto Increment)	299 days left	[Email] [Link] [Delete] [Refresh]
Antu	admin@secpod.com	2 Used (Auto Increment)	299 days left	[Email] [Link] [Delete] [Refresh]
Gururaj	admin@secpod.com	8 Used (Auto Increment)	299 days left	[Email] [Link] [Delete] [Refresh]
Rinu	krinu@secpod.com	1 Used (Auto Increment)	299 days left	[Email] [Link] [Delete] [Refresh]
Suraj	admin@secpod.com	23 Used (Auto Increment)	299 days left	[Email] [Link] [Delete] [Refresh]

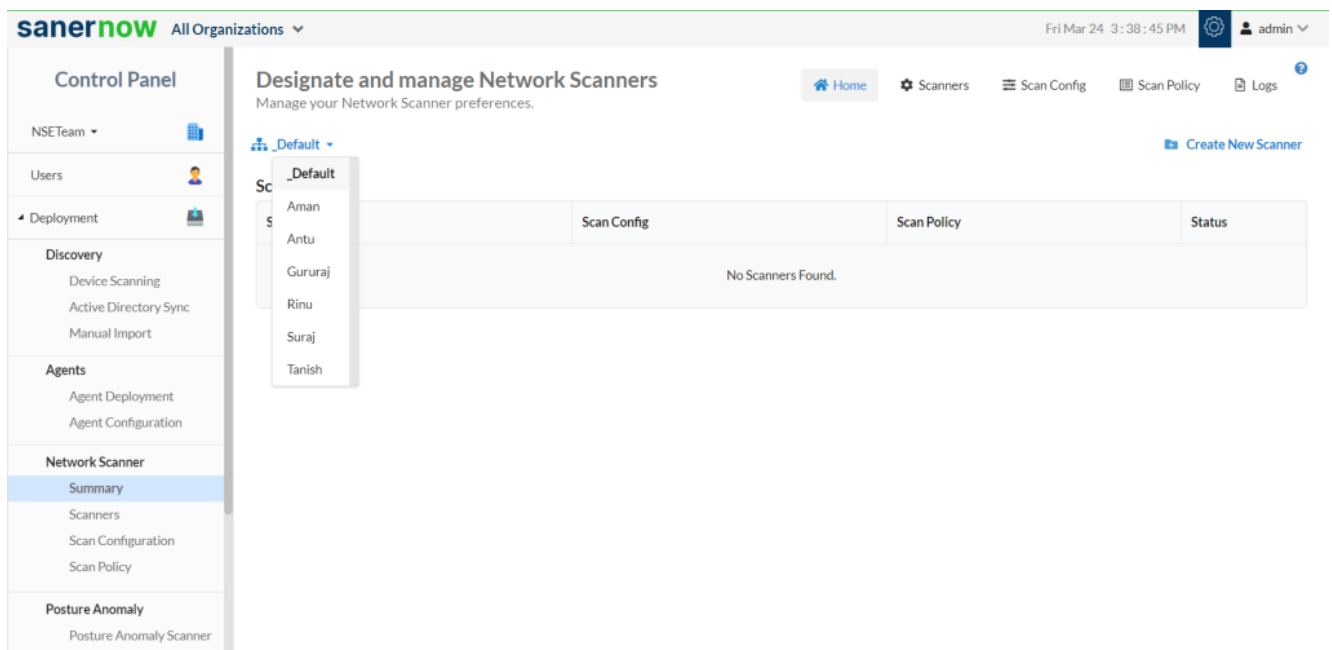
2. In Control Panel, click on **Deployment**



3. Under Network Scanner, click on **Summary**

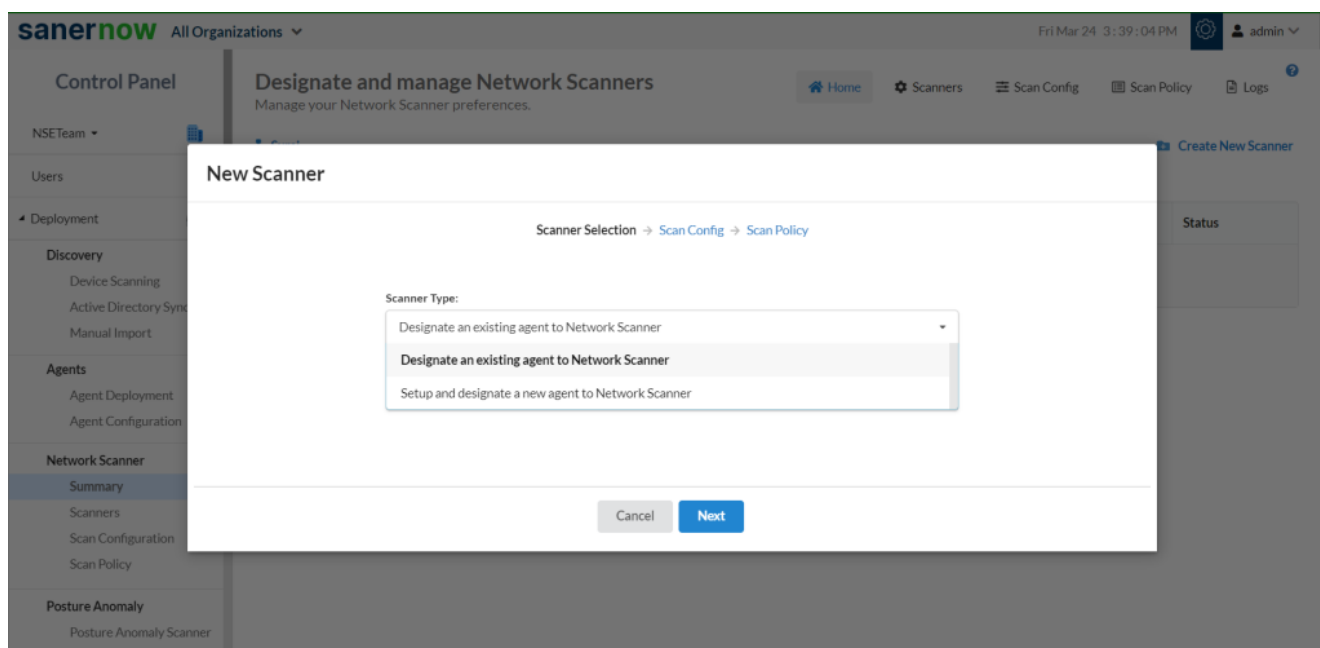
4. To designate saner agent to perform network scanner, follow the three steps: **Scanner Selection -> Scan Config->Scan Policy**.

5. In Summary, from the drop-down select the account

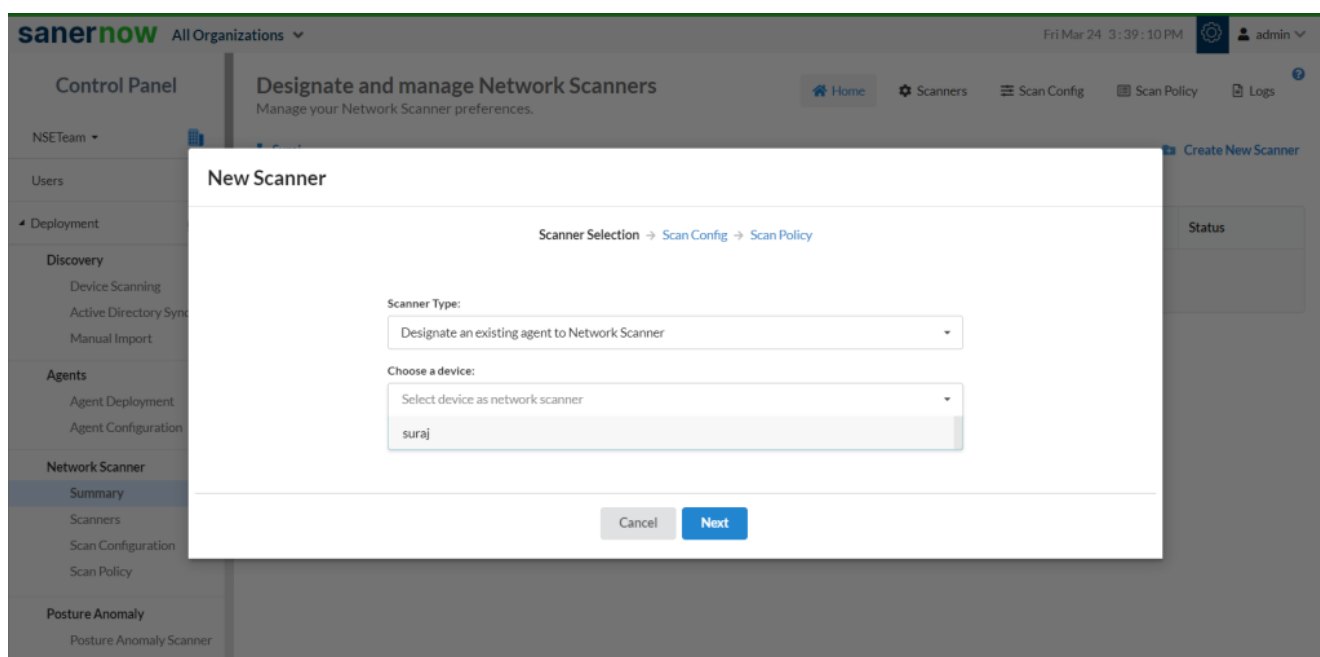


6. Now, click on **Create New Scanner**

7. Choose the scanner type: **Designate an existing agent to network scanner**



8. Select a device from the drop-down menu to designate as a network scanner



9. In **New Scan Config**, specify:

- Name
- Targets: Specify the comma-separated list of target IP addresses or domain names for scanning. This member is an IPv4 address. This field supports CIDR format and domain name as inputs.
E.g.: 192.168.1.1 or 192.168.1.1/32 or 192.168.1.1-10
- Exclude List: Specify a comma-separated list of target IP addresses to be excluded from the scan. This member is an IPv4 address
E.g.: 192.168.1.5,192.168.1.6
- Select Ports: Specify a comma-separated list of ports to scan. Users can select default ports, or they can customize their own set of TCP/UDP ports based on the configuration
- Specify a comma-separated list of ports to scan. You can select default ports or customize their own set of TCP/UDP ports based on the configuration
- Specify the ports to be scanned. By default, the **Default Ports** option is selected. Click on the drop-down menu to select the following default ports options:
 - **Top 1000**
 - **Top 500**
 - **Top 100**
 - **None**
- Click on the help icon (?) next to Select Ports for more details on the above options
- You can manually provide the ports to scan by clicking on the **Enter Custom Ports** check

box

- **Enter Custom Ports:** Click on the check box to provide the TCP and UDP ports manually.
 - **TCP Ports:** Specifies a comma-separated list of TCP ports to scan. E.g.: 80 or 21,80 or 1-65535 or 1-1023,3389
 - **UDP Ports:** Specifies a comma-separated list of UDP ports to scan. E.g.: 80 or 21,80 or 1-65535 or 1-1023,3389

10. Schedule scan on a daily, weekly, and monthly basis. By default, the None option will be selected.

- **None:** A network scan has to be manually triggered.
- **Daily:** Every day at a specific HH:MM time, a network scan will be initiated.

The screenshot displays the 'New Scanner' configuration window in the SanerNow application. The window is titled 'New Scanner' and has a breadcrumb trail: 'Scanner Selection → Scan Config → Scan Policy'. The configuration fields include:

- Exclude List:** A text input field containing '192.168.1.4'.
- Select Ports (*):** A dropdown menu currently set to 'None'.
- Enter Custom Ports:** A checked checkbox.
- TCP Ports:** A text input field containing '80'.
- UDP Ports:** A text input field containing '1'.
- Scan Schedule:** A section with a 'Run Scan' radio button group. The 'Daily' option is selected. Below the radio buttons is a 'Start Time' dropdown menu.
- Start Time:** A dropdown menu showing a grid of times from 5:00 PM to 5:55 PM in 5-minute increments. The 'Start Time' field is currently set to 1:00 PM.

The interface also features a sidebar on the left with navigation options: Control Panel, Users, Deployment, Discovery, Agents, Network Scanner, Posture Anomaly, and Authentication. The top right corner shows the user 'admin' and the date 'Fri Mar 24 3:46:01 PM'.

- **Weekly:** On specific day/s every week, at HH:MM time, a network scan will be initiated.

SanerNow All Organizations

Control Panel

Designate Manage your Network

Scanners

Scanners

Scanner Selection → Scan Config → Scan Policy

Exclude List

192.168.1.4

Select Ports (*)

None

☒ Enter Custom Ports

TCP Ports

80

UDP Ports

1

Scan Schedule

Run Scan: ☐ None ☐ Daily ☒ Weekly ☐ Monthly

Run every 1 selected weeks on 1 selected days

Start Time

6:00 PM

End Time

5:00 PM

Cancel Back Next

- **Monthly:** On specific day/s of every month, at HH:MM time, a network scan will be initiated.

SanerNow All Organizations

Control Panel

Designate Manage your Network

Scanners

Scanners

Scanner Selection → Scan Config → Scan Policy

Exclude List

192.168.1.4

Select Ports (*)

None

☒ Enter Custom Ports

TCP Ports

80

UDP Ports

1

Scan Schedule

Run Scan: ☐ None ☐ Daily ☐ Weekly ☒ Monthly

Run every selected weeks weeks on selected days days

Start Time

5:00 PM

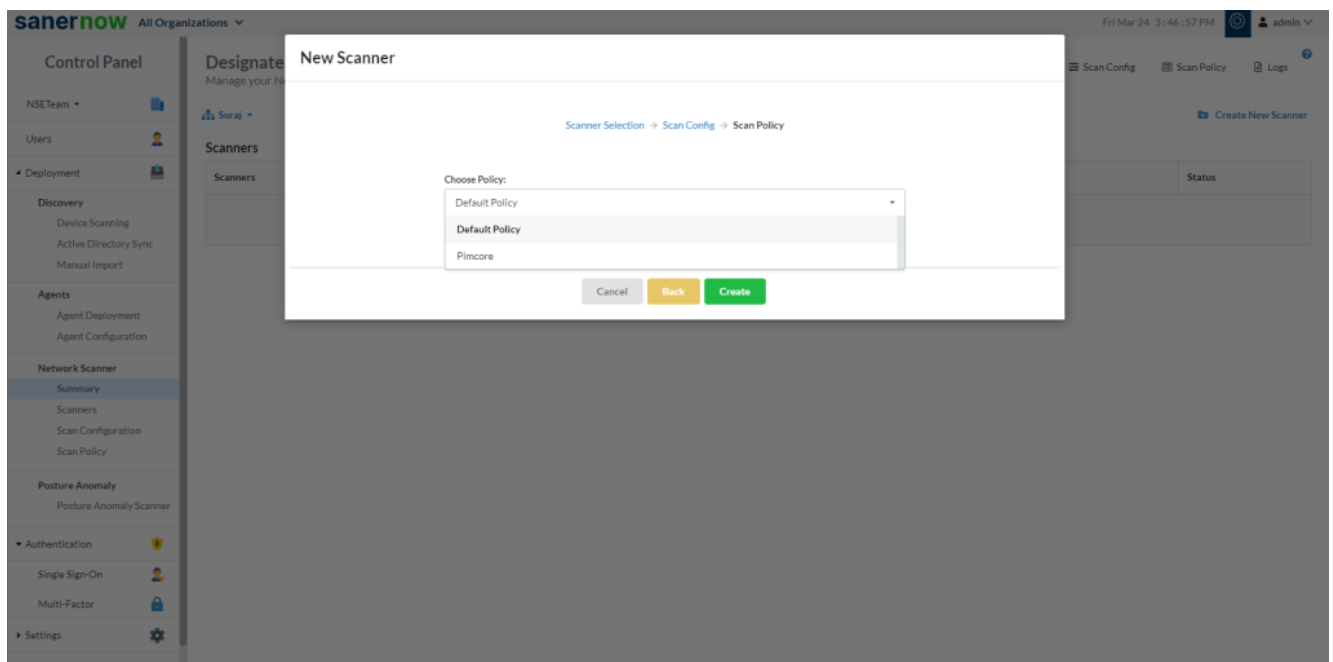
End Time

6:55 PM

Cancel Back Next

11. Click on **Create**

12. In **Scan Policy**, choose the policy you can add custom policy or SanerNow chooses default policy.



Now you know how to designate saner agent to perform network scan.