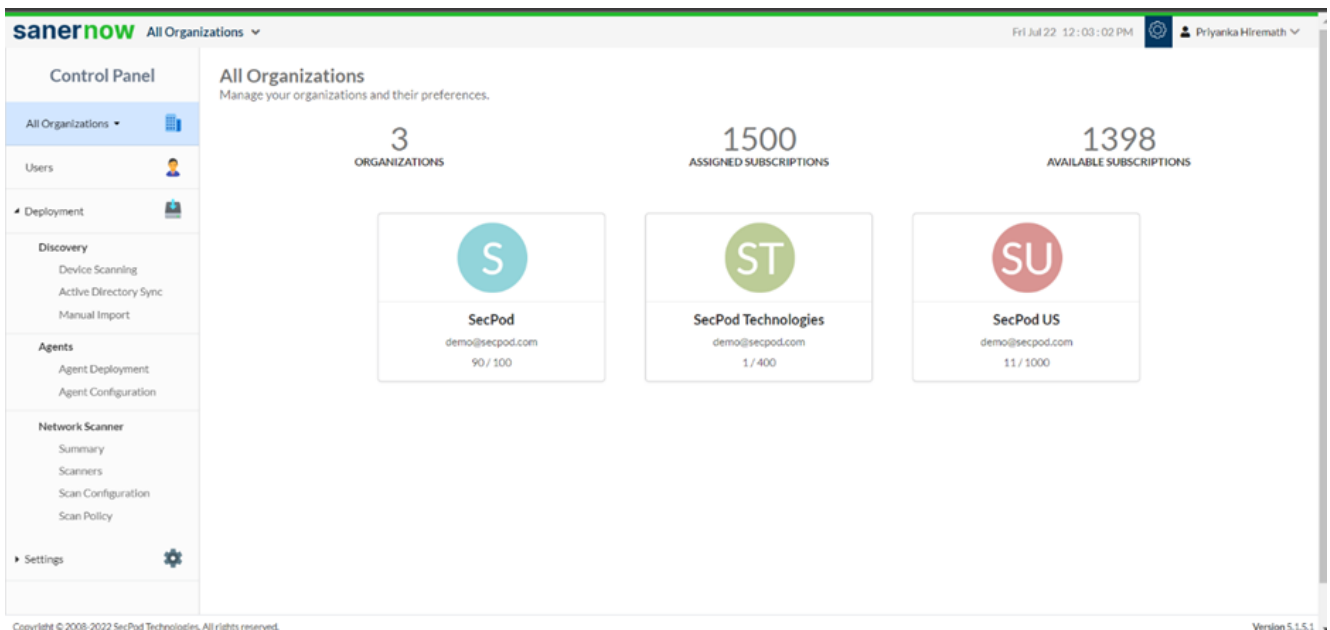


## How to run an asset scan?

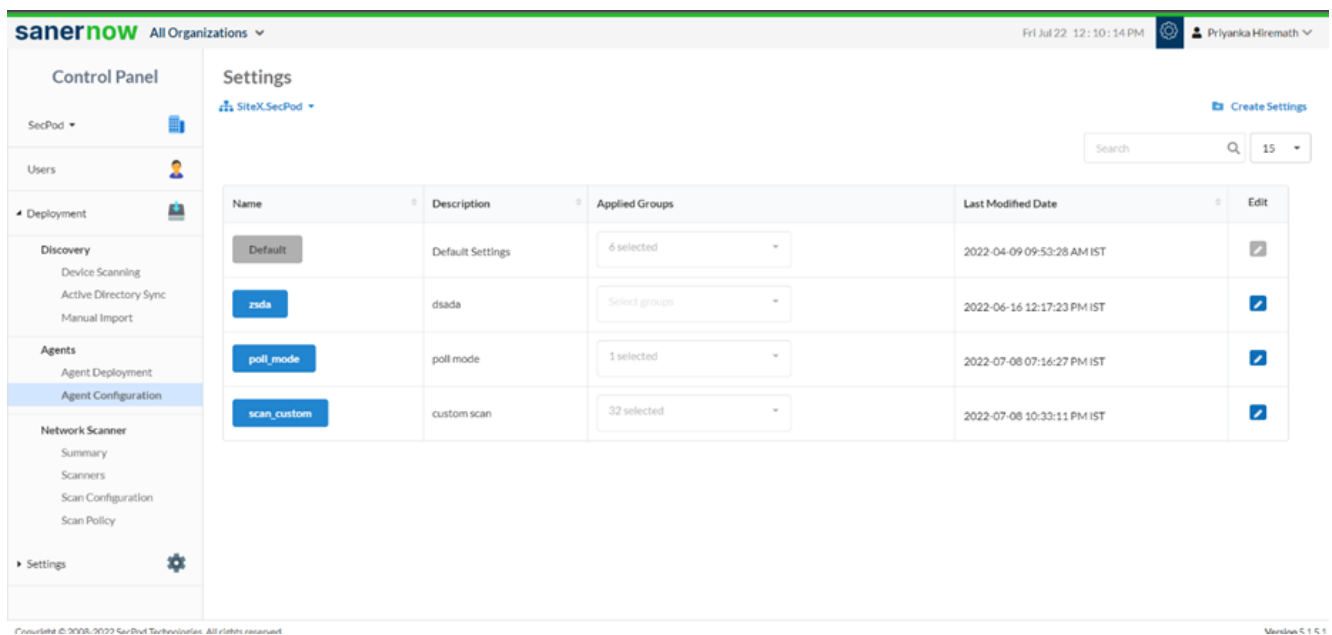
Monitoring IT assets continuously is a big challenge. SanerNow facilitates on-demand asset scans, and you can schedule everyday scans.

Let us learn how to perform asset scans in SanerNow.

1. Go to the **Control Panel** and select the organization.

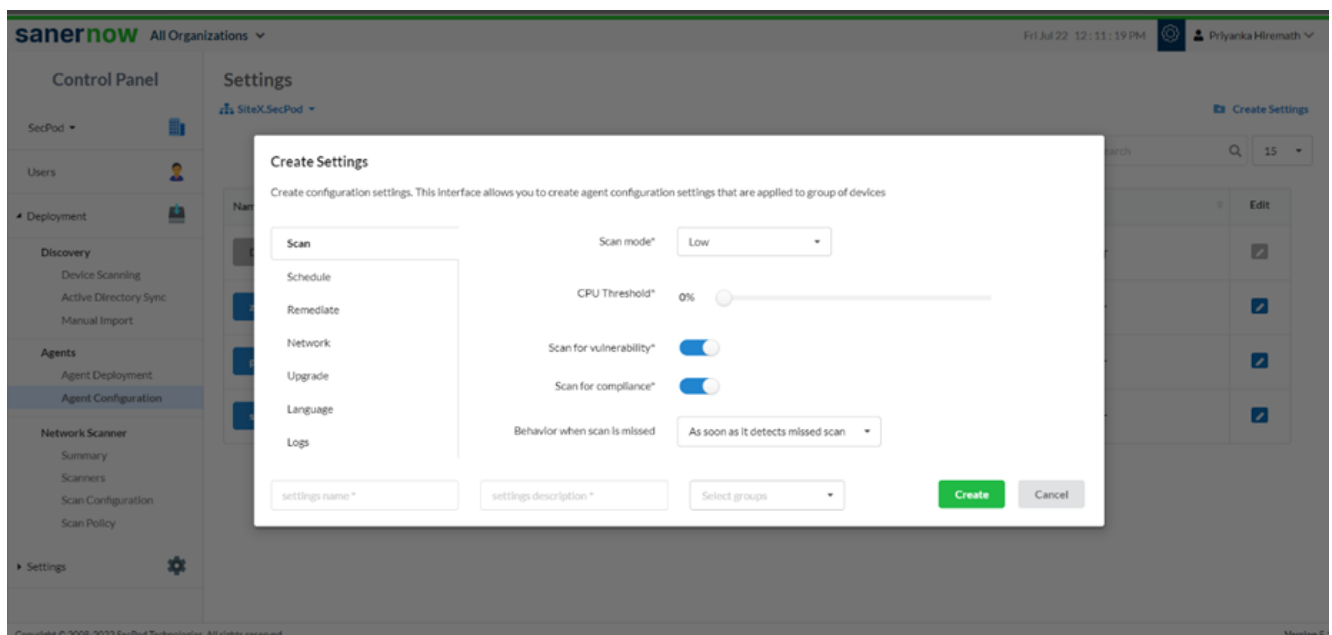


2. Under **Agents**, select **Agent Configuration**.

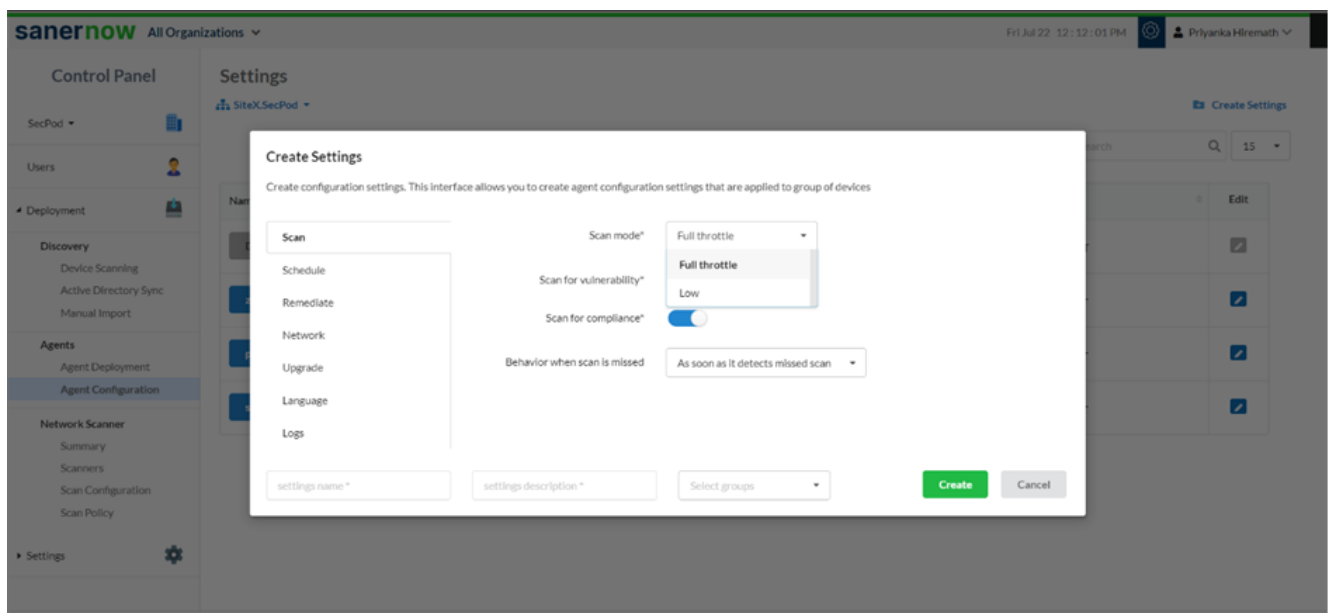


3. Click on **Create Settings**.

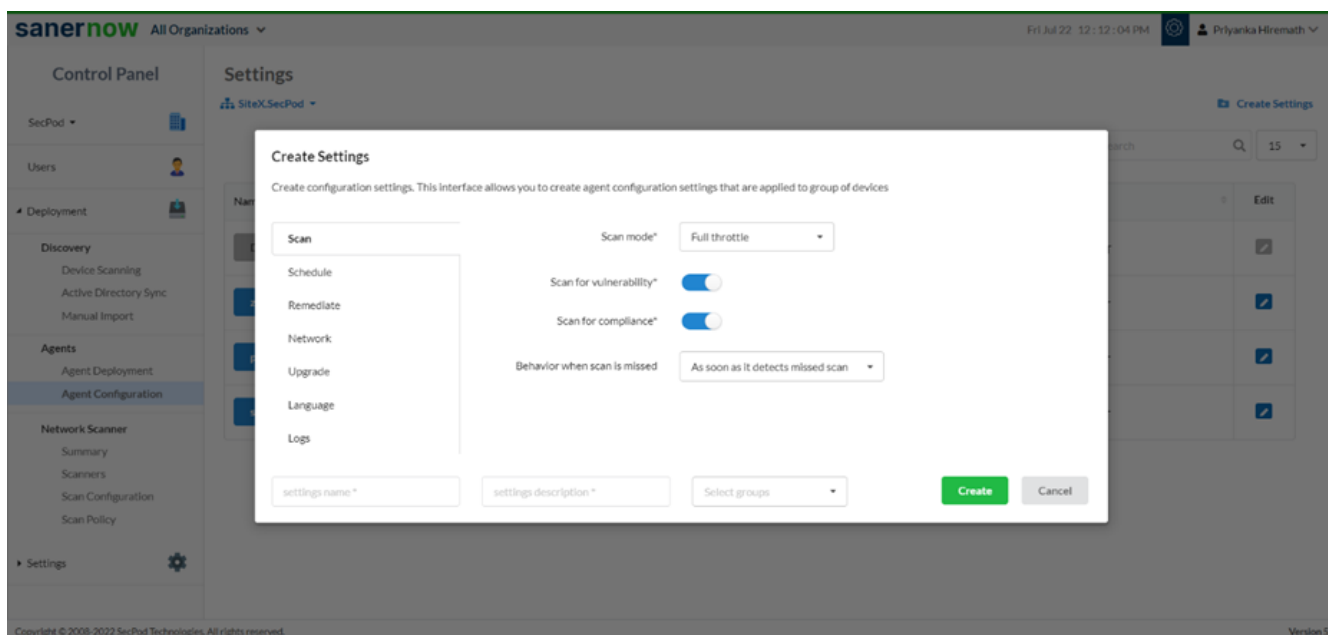
In **Create Settings** window, you will have various options to configure your agent.



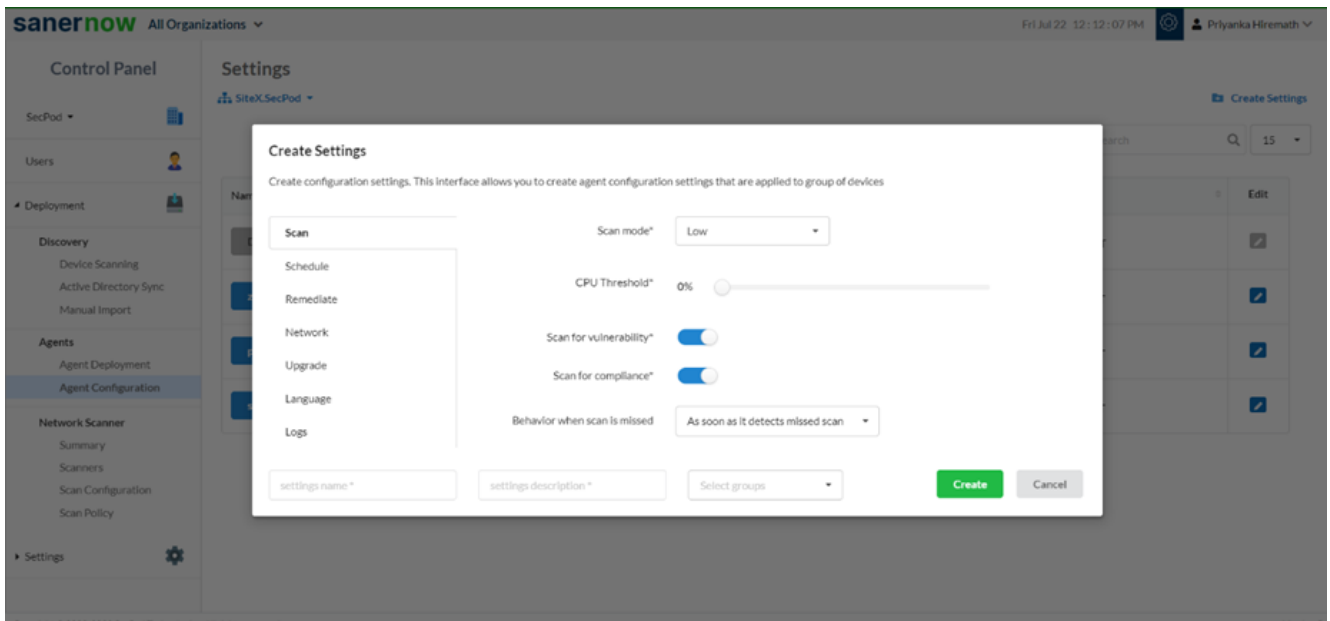
4. In the **Scan section**, select the scan mode from the drop-down list. You have two scan modes:



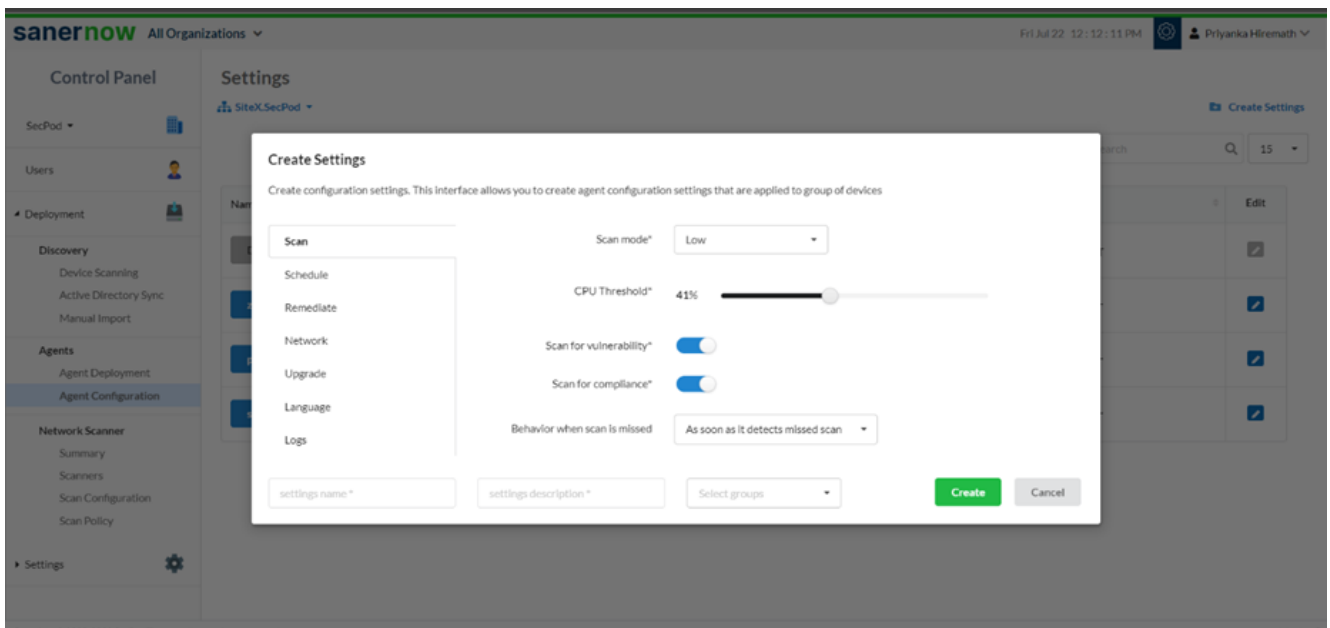
- Full throttle scan mode: It uses all the resources of the CPU to scan



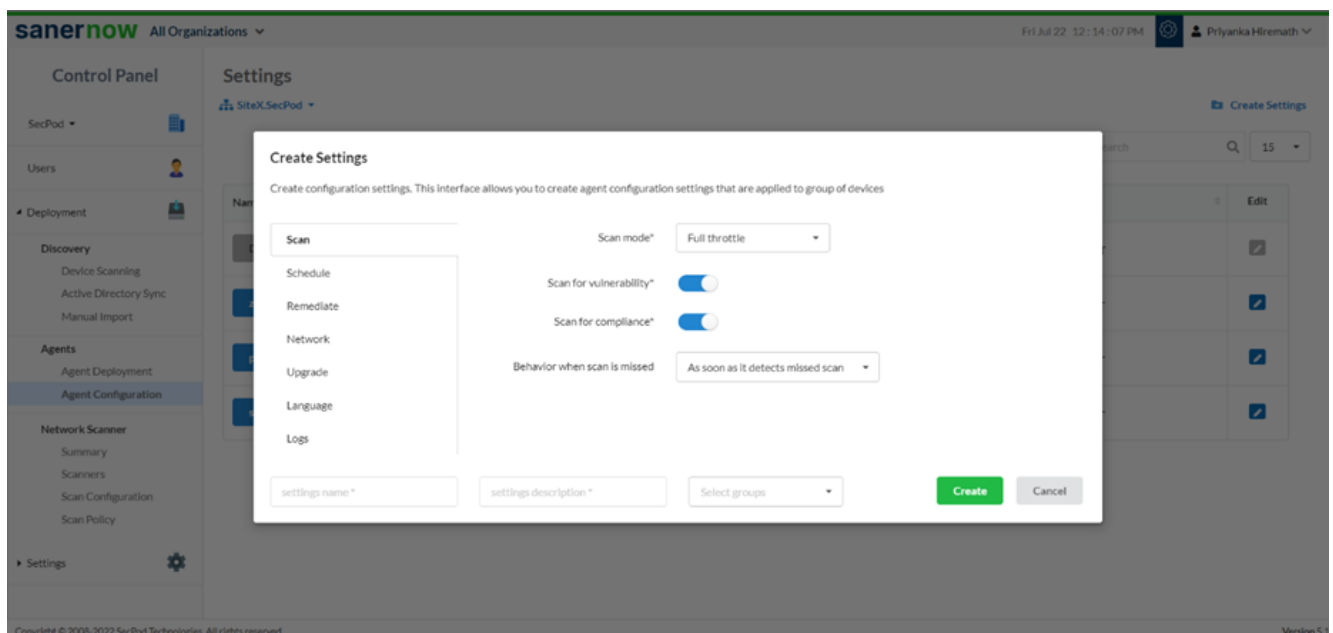
- Low scan mode: It scans on low mode



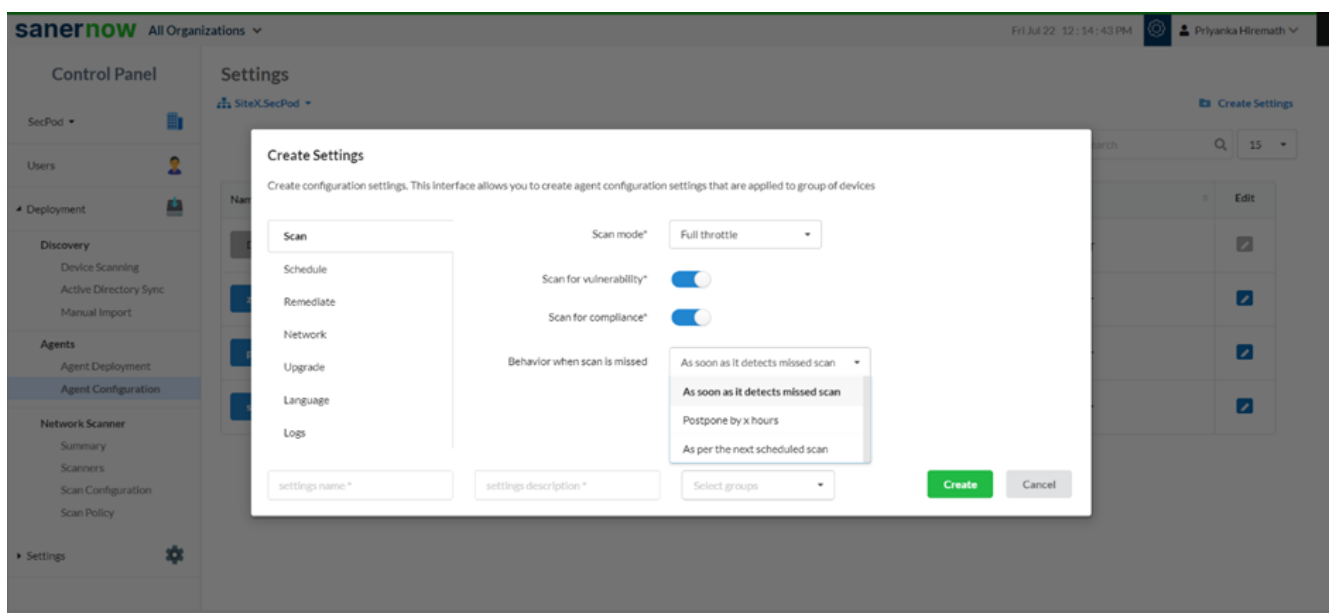
- You can set the CPU threshold



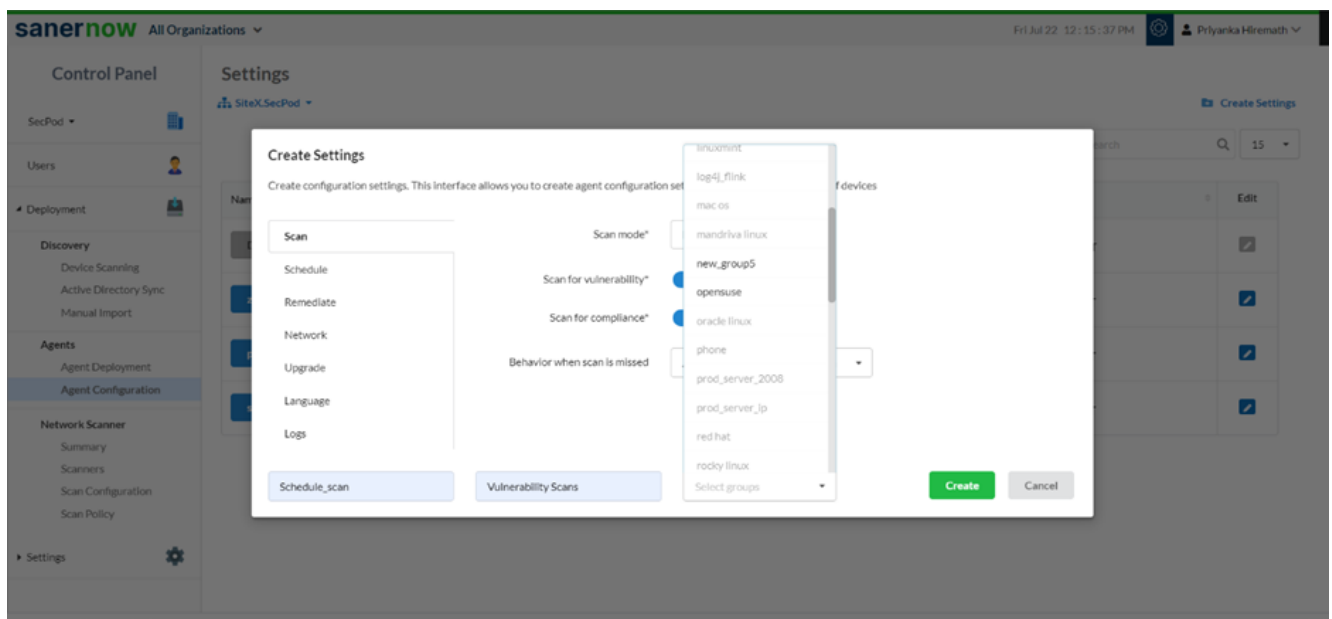
5. Now, you can enable and disable the option to scan for Vulnerability and Compliance.



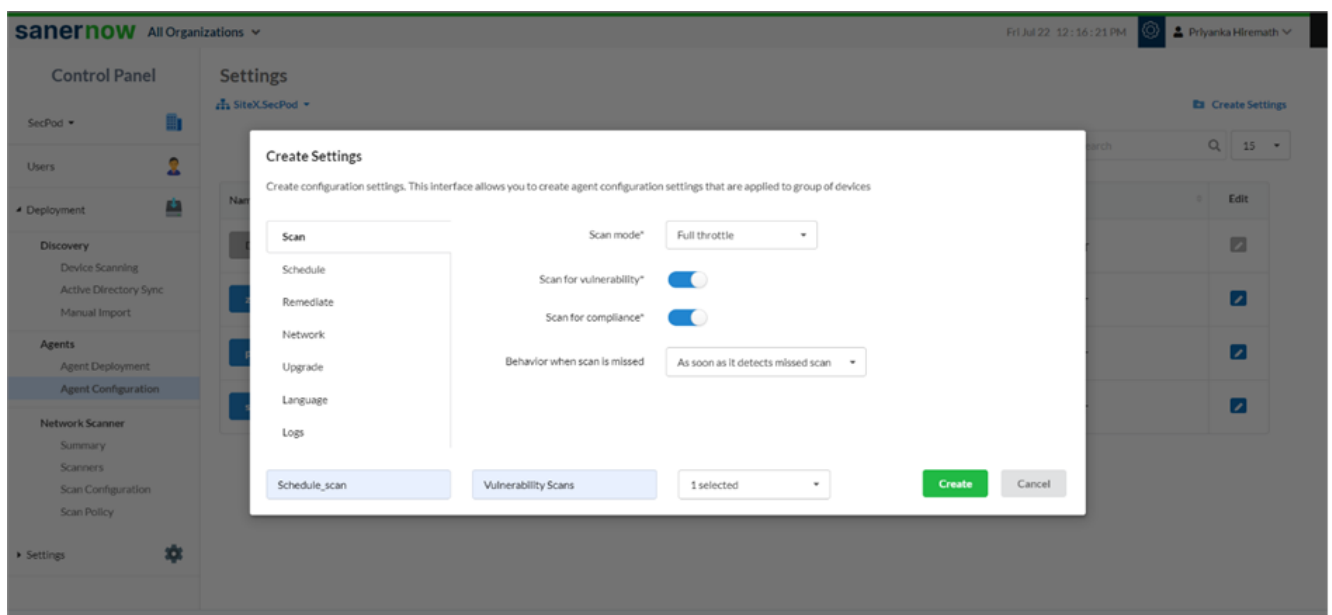
6. Suppose the scan is missed; you can set up the behavior of the missed scan.



7. Assign the setting name, setting description, and groups to apply the agent configuration settings.

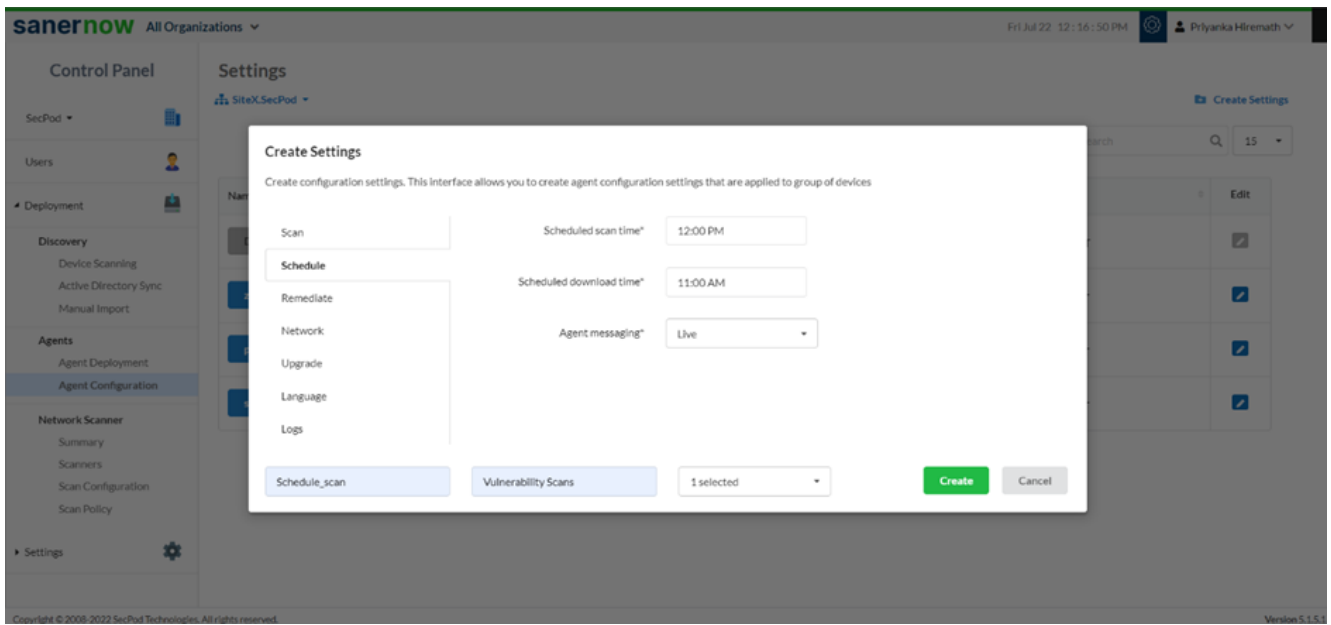


8. Click on **Create**.

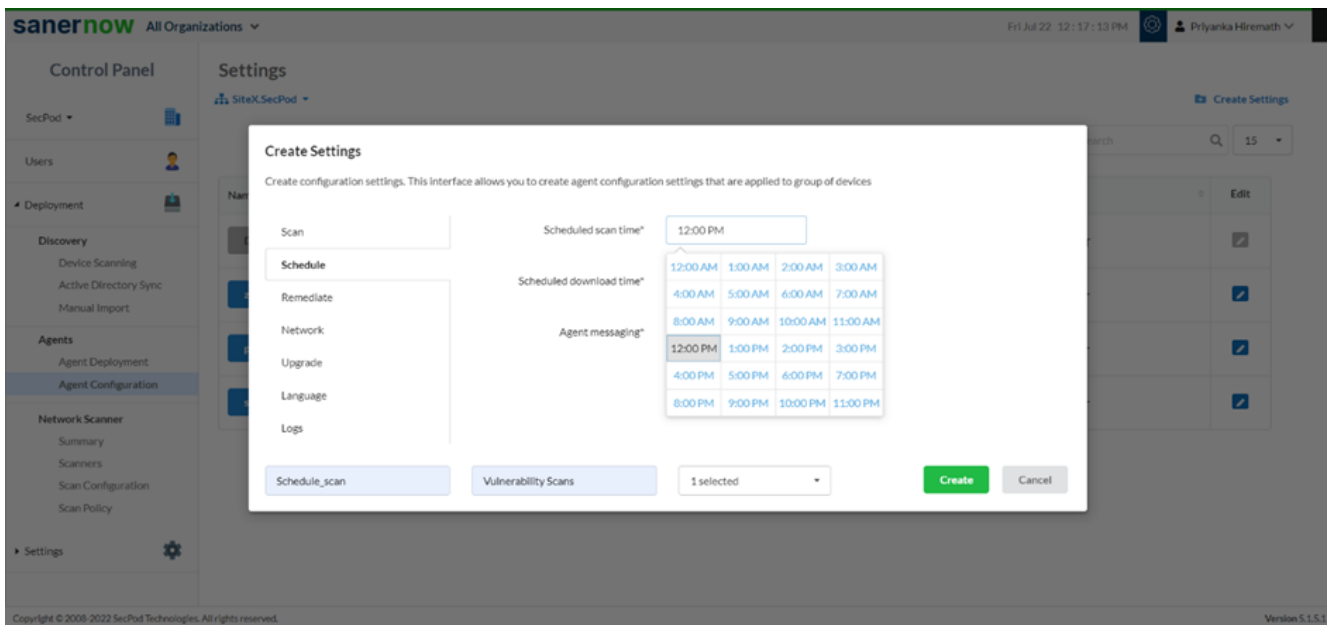


9. You can also schedule everyday scans through the schedule option.

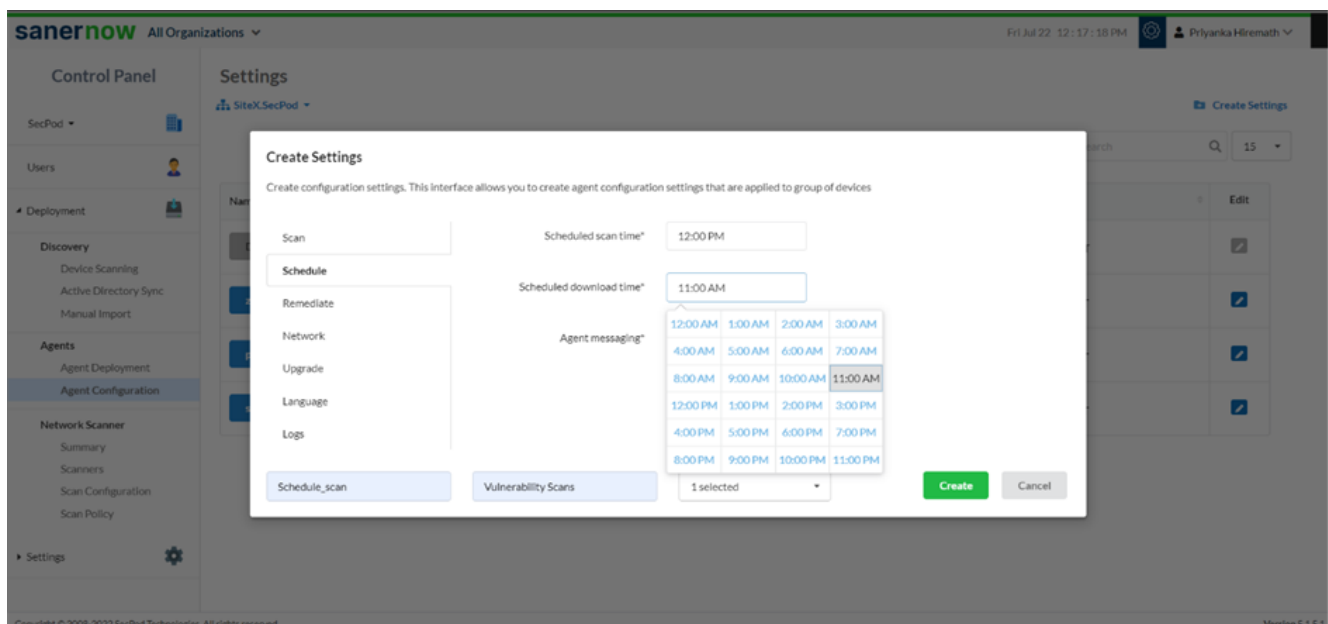
- Click on the **Schedule** option.



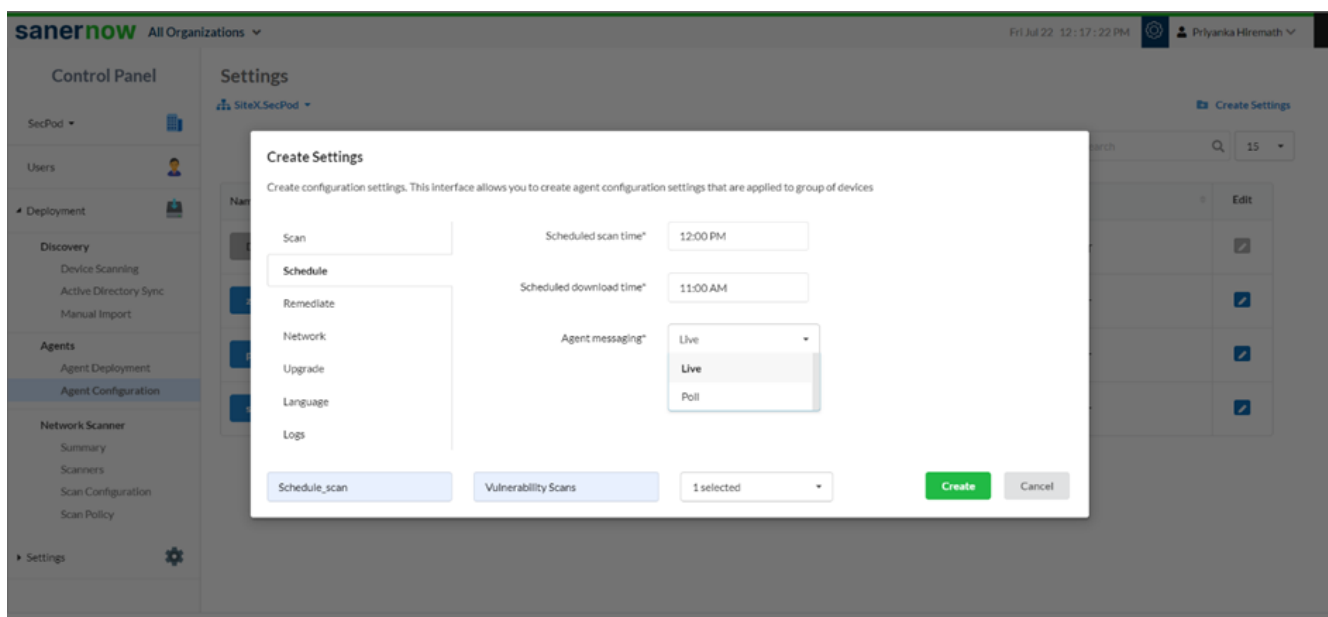
- Set the everyday schedule scan time.



- Set the schedule download time



- From the drop-down list, choose the method of agent messaging: Live or Poll



9. Click on **Create**.

Now you have configured your agent to run the asset scan.